

SDHB antibody

Catalog No: #22803



Orders: order@signalwayantibody.com

Support: tech@signalwayantibody.com

Description

Product Name	SDHB antibody
Host Species	Rabbit
Clonality	Polyclonal
Purification	Purified by antigen-affinity chromatography.
Applications	WB IF
Species Reactivity	Hu
Immunogen Type	Peptide
Immunogen Description	Synthetic peptide contain a sequence corresponding to a region within amino acids 271 and 280 of SDHB
Target Name	SDHB
Accession No.	NCBI Gene ID: 6390 NCBI mRNA#: NM_003000 NCBI Protein#: NP_002991
Formulation	Supplied in 1XPBS, 40% Glycerol (pH7.0). 0.01% Thimerosal was added as a preservative.
Storage	Store at -20°C for long term preservation (recommended). Store at 4°C for short term use.

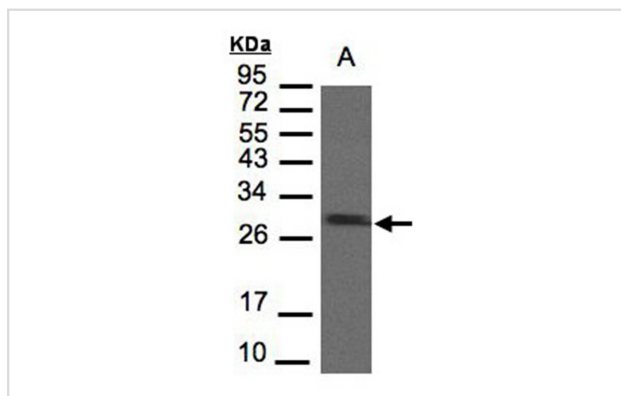
Application Details

Predicted MW: 32kd

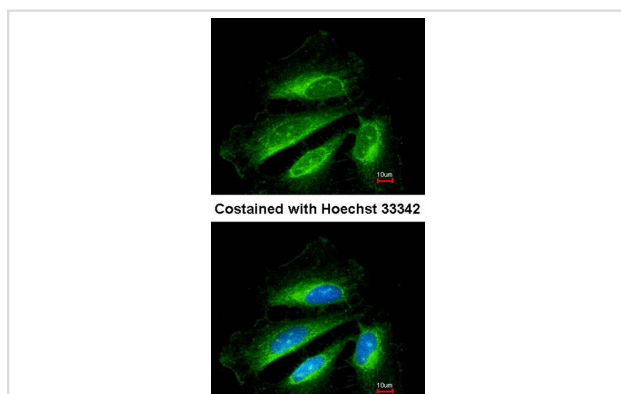
Western blotting: 1:500-1:3000

Immunofluorescence: 1:100-1:200

Images



Sample(30 ug of whole cell lysate)
 A: MOLT4
 12% SDS PAGE
 Primary antibody diluted at 1: 1000



Immunofluorescence analysis of methanol-fixed HeLa, using SDHB antibody at 1: 200 dilution.

Background

Complex II of the respiratory chain, which is specifically involved in the oxidation of succinate, carries electrons from FADH to CoQ. The complex is composed of four nuclear-encoded subunits and is localized in the mitochondrial inner membrane. The iron-sulfur subunit is highly conserved and contains three cysteine-rich clusters which may comprise the iron-sulfur centers of the enzyme. Sporadic and familial mutations in this gene result in paragangliomas and pheochromocytoma, and support a link between mitochondrial dysfunction and tumorigenesis. [provided by RefSeq]

Note: This product is for in vitro research use only and is not intended for use in humans or animals.