

REA antibody

Catalog No: #22802



Orders: order@signalwayantibody.com

Support: tech@signalwayantibody.com

Description

Product Name	REA antibody
Host Species	Rabbit
Clonality	Polyclonal
Purification	Purified by antigen-affinity chromatography.
Applications	WB IHC IF
Species Reactivity	Hu
Immunogen Type	Recombinant protein
Immunogen Description	Recombinant protein fragment contain a sequence corresponding to a region within amino acids 45 and 298 of REA
Target Name	REA
Accession No.	NCBI Gene ID: 11331NCBI mRNA#: NM_007273NCBI Protein#: NP_009204
Formulation	Supplied in 0.1M Tris-buffered saline with 20% Glycerol (pH7.0). 0.01% Thimerosal was added as a preservative.
Storage	Store at -20°C for long term preservation (recommended). Store at 4°C for short term use.

Application Details

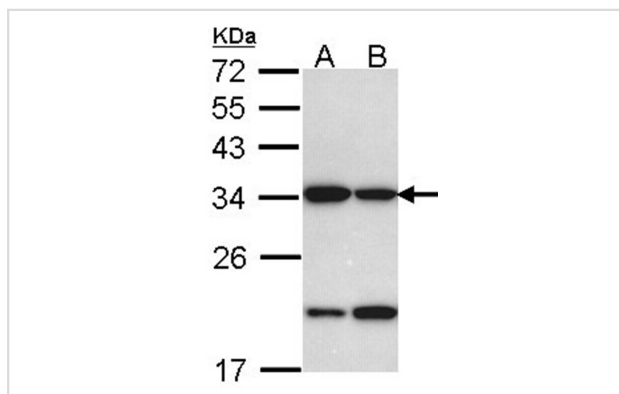
Predicted MW: 33kd

Western blotting: 1:500-1:3000

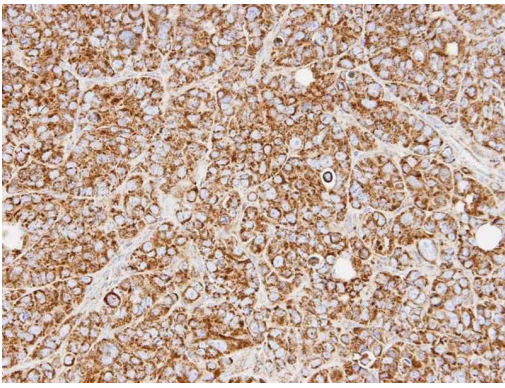
Immunohistochemistry: 1:50-1:500

Immunofluorescence: 1:100-1:200

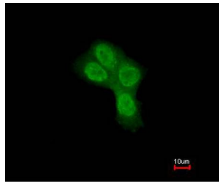
Images



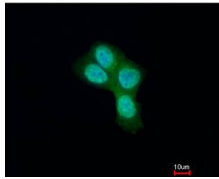
Sample (30 ug of whole cell lysate)
 A: H1299
 B: HeLa
 10% SDS PAGE
 Primary antibody diluted at 1: 1000



Immunohistochemical analysis of paraffin-embedded SW480 xenograft, using Prohibitin 2 antibody at 1: 500 dilution.



Merged with DNA probe



Immunofluorescence analysis of paraformaldehyde-fixed A431, using REA antibody at 1: 200 dilution.

Background

Acts as a mediator of transcriptional repression by nuclear hormone receptors via recruitment of histone deacetylases (By similarity). Functions as an estrogen receptor (ER)-selective coregulator that potentiates the inhibitory activities of antiestrogens and represses the activity of estrogens. Competes with NCOA1 for modulation of ER transcriptional activity. Probably involved in regulating mitochondrial respiration activity and in aging.

Note: This product is for in vitro research use only and is not intended for use in humans or animals.