

HL antibody

Catalog No: #22794



Orders: order@signalwayantibody.com

Support: tech@signalwayantibody.com

Description

Product Name	HL antibody
Host Species	Rabbit
Clonality	Polyclonal
Purification	Purified by antigen-affinity chromatography.
Applications	WB IHC IF
Species Reactivity	Hu
Immunogen Type	Recombinant protein
Immunogen Description	Recombinant protein fragment contain a sequence corresponding to a region within amino acids 1 and 185 of HL
Target Name	HL
Accession No.	NCBI Gene ID: 3155NCBI mRNA#: NM_000191NCBI Protein#: NP_000182
Formulation	Supplied in 0.1M Tris-buffered saline with 10% Glycerol (pH7.0). 0.01% Thimerosal was added as a preservative.
Storage	Store at -20°C for long term preservation (recommended). Store at 4°C for short term use.

Application Details

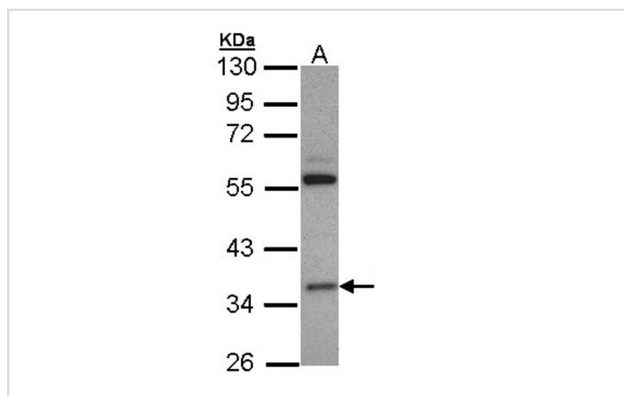
Predicted MW: 34kd

Western blotting: 1:500-1:3000

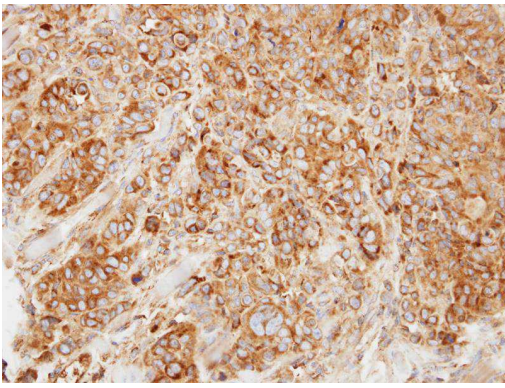
Immunohistochemistry: 1:50-1:500

Immunofluorescence: 1:100-1:200

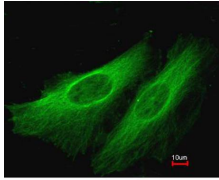
Images



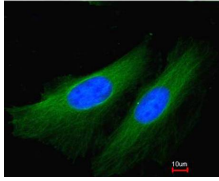
Sample (30 ug of whole cell lysate)
 A: H1299
 10% SDS PAGE
 Primary antibody diluted at 1: 3000



Immunohistochemical analysis of paraffin-embedded SW480 xenograft, using HMGCL antibody at 1: 500 dilution.



Merged with DNA probe



Immunofluorescence analysis of paraformaldehyde-fixed HeLa, using HL antibody at 1: 200 dilution.

Note: This product is for in vitro research use only and is not intended for use in humans or animals.