

# RICTOR antibody

Catalog No: #22594

Orders: [order@signalwayantibody.com](mailto:order@signalwayantibody.com)Support: [tech@signalwayantibody.com](mailto:tech@signalwayantibody.com)

## Description

|                       |  |
|-----------------------|--|
| Product Name          | RICTOR antibody  |
| Host Species          | Rabbit   |
| Clonality             | Polyclonal   |
| Purification          | Purified by antigen-affinity chromatography.   |
| Applications          | WB IHC IF  |
| Species Reactivity    | Hu   |
| Immunogen Type        | Peptide  |
| Immunogen Description | Synthetic peptide contain a sequence corresponding to a region within amino acids 1648 and 1708 of RICTOR      |
| Target Name           | RICTOR   |
| Accession No.         | NCBI Gene ID: 253260 NCBI mRNA#: NM_152756.3 NCBI Protein#: NP_689969  |
| Formulation           | Supplied in 0.1M Tris-buffered saline with 10% Glycerol (pH7.0). 0.01% Thimerosal was added as a preservative. |
| Storage               | Store at -20°C for long term preservation (recommended). Store at 4°C for short term use.                      |

## Application Details

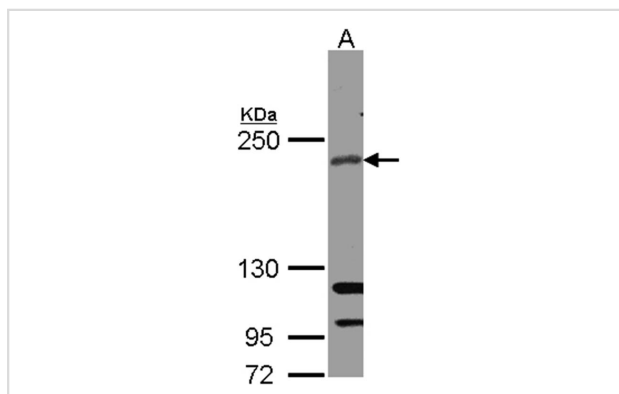
Predicted MW: 192kd

Western blotting: 1:500-1:3000

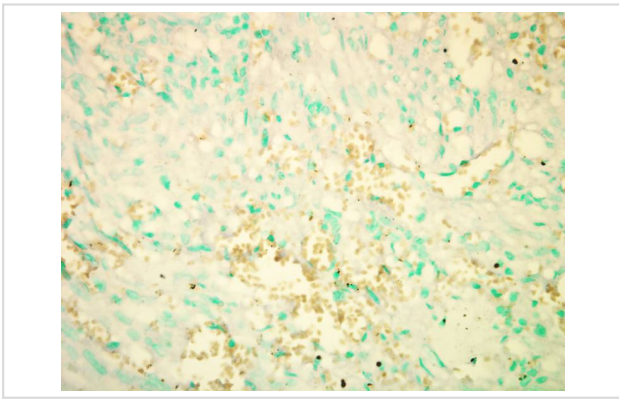
Immunohistochemistry: 1:100-1:250

Immunofluorescence: 1:100-1:200

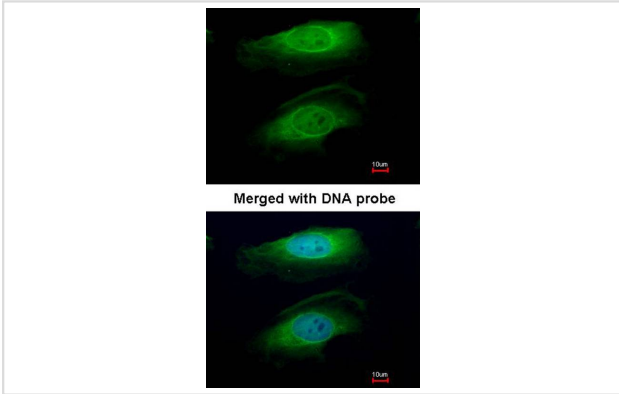
## Images



Sample(30 ug whole cell lysate)  
 A: A431  
 5% SDS PAGE  
 Primary antibody diluted at 1: 1000



Staining of Human Kidney cancer tissue sections using anti-Rictor antibody.



Immunofluorescence analysis of paraformaldehyde-fixed HeLa, using RICTOR antibody at 1: 200 dilution.

## Background

RICTOR and MTOR (FRAP1; MIM 601231) are components of a protein complex that integrates nutrient- and growth factor-derived signals to regulate cell growth (Sarbasov et al., 2004 [PubMed 15268862]).[supplied by OMIM]

Note: This product is for in vitro research use only and is not intended for use in humans or animals.