

## PLAP antibody

Catalog No: #22587

Orders: order@signalwayantibody.com

Support: tech@signalwayantibody.com

## Description

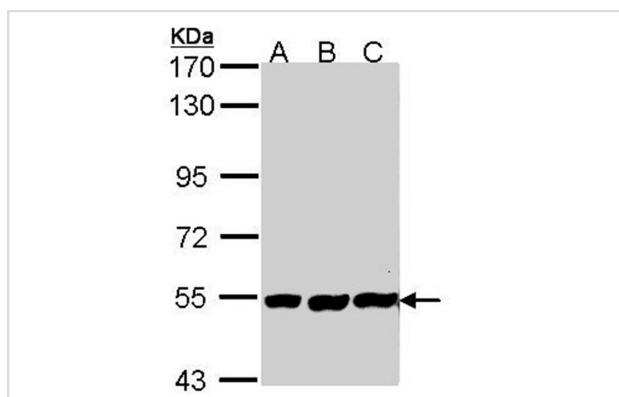
|                       |  |
|-----------------------|--|
| Product Name          | PLAP antibody  |
| Host Species          | Rabbit   |
| Clonality             | Polyclonal   |
| Purification          | Purified by antigen-affinity chromatography.   |
| Applications          | WB   |
| Species Reactivity    | Hu   |
| Immunogen Type        | Recombinant protein  |
| Immunogen Description | Recombinant protein fragment contain a sequence corresponding to a region within amino acids 163 and 357 of Human ALPP |
| Target Name           | PLAP   |
| Accession No.         | NCBI Gene ID: 250NCBI mRNA#: BC009647NCBI Protein#: AAH09647   |
| Formulation           | Supplied in 0.1M Tris-buffered saline with 10% Glycerol (pH7.0). 0.01% Thimerosal was added as a preservative.         |
| Storage               | Store at -20°C for long term preservation (recommended). Store at 4°C for short term use.                              |

## Application Details

Predicted MW: 58kd

Western blotting: 1:500-1:3000

## Images



Sample (30 ug of whole cell lysate)

A: H1299

B: HeLa

C: Hep G2

7.5% SDS PAGE

Primary antibody diluted at 1: 500

## Background

There are at least four distinct but related alkaline phosphatases: intestinal, placental, placental-like, and liver/bone/kidney (tissue non-specific). The first three are located together on chromosome 2 while the tissue non-specific form is located on chromosome 1. The product of this gene is a membrane bound glycosylated enzyme, also referred to as the heat stable form, that is expressed primarily in the placenta although it is closely related to the intestinal form of the enzyme as well as to the placental-like form. The coding sequence for this form of alkaline phosphatase is unique in that the 3' untranslated region contains multiple copies of an Alu family repeat. In addition, this gene is polymorphic and three common alleles (type 1, type 2 and type 3) for this form of alkaline phosphatase have been well characterized. [provided by RefSeq]

---

Note: This product is for in vitro research use only and is not intended for use in humans or animals.