

## RALA antibody

Catalog No: #22525

Orders: order@signalwayantibody.com

Support: tech@signalwayantibody.com

## Description

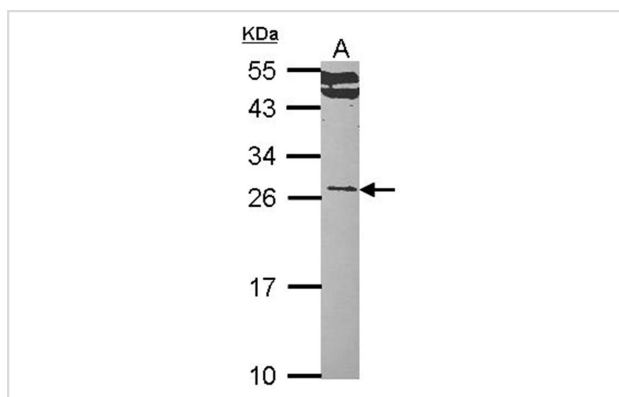
Product Name	RALA antibody
Host Species	Rabbit
Clonality	Polyclonal
Purification	Purified by antigen-affinity chromatography.
Applications	WB
Species Reactivity	Hu
Immunogen Type	Recombinant protein
Immunogen Description	Recombinant protein fragment contain a sequence corresponding to a region within amino acids 1 and 179 of RALA
Target Name	RALA
Accession No.	NCBI Gene ID: 5898NCBI mRNA#: BC039858NCBI Protein#: AAH39858
Formulation	Supplied in 0.1M Tris-buffered saline with 20% Glycerol (pH7.0). 0.01% Thimerosal was added as a preservative.
Storage	Store at -20°C for long term preservation (recommended). Store at 4°C for short term use.

## Application Details

Predicted MW: 24kd

Western blotting: 1:500-1:3000

## Images



Sample (30 ug of whole cell lysate)  
A: Hep G2  
12% SDS PAGE  
RALA antibody diluted at 1: 1000

## Background

The product of this gene belongs to the small GTPase superfamily, Ras family of proteins. GTP-binding proteins mediate the transmembrane signaling initiated by the occupancy of certain cell surface receptors. This gene encodes a low molecular mass ras-like GTP-binding protein that shares about 50% similarity with other ras proteins. [provided by RefSeq]

---

Note: This product is for in vitro research use only and is not intended for use in humans or animals.