

COPD antibody

Catalog No: #22506



Orders: order@signalwayantibody.com

Support: tech@signalwayantibody.com

Description

Product Name	COPD antibody
Host Species	Rabbit
Clonality	Polyclonal
Purification	Purified by antigen-affinity chromatography.
Applications	WB IF
Species Reactivity	Hu
Immunogen Type	Recombinant protein
Immunogen Description	Recombinant protein fragment contain a sequence corresponding to a region within amino acids 89 and 492 of COPD
Target Name	COPD
Accession No.	NCBI Gene ID: 372NCBI mRNA#: NM_001655NCBI Protein#: NP_001646
Formulation	Supplied in 0.1M Tris-buffered saline with 10% Glycerol (pH7.0). 0.01% Thimerosal was added as a preservative.
Storage	Store at -20°C for long term preservation (recommended). Store at 4°C for short term use.

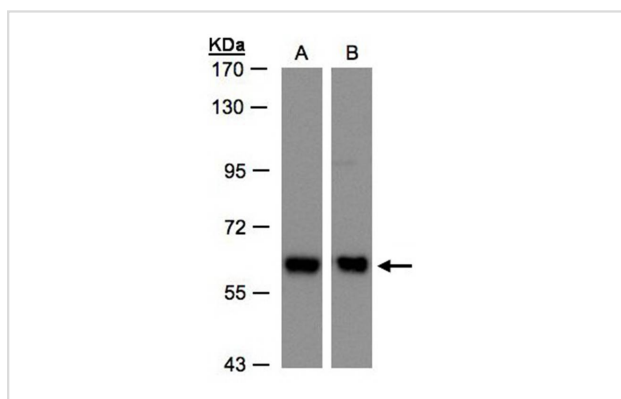
Application Details

Predicted MW: 57kd

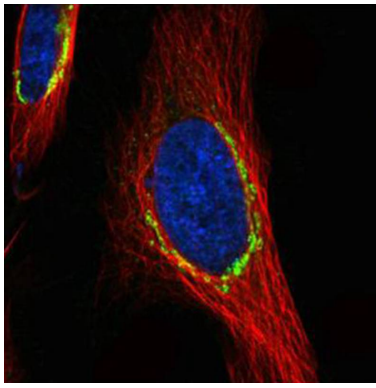
Western blotting: 1:500-1:3000

Immunofluorescence: 1:100-1:200

Images



Sample(30 ug whole cell lysate)
 A: H1299
 B: Hep G2
 7.5% SDS PAGE
 Primary antibody diluted at 1: 500



Confocal immunofluorescence analysis (Olympus FV10i) of paraformaldehyde-fixed HeLa, using COPD antibody (green) at 1: 500 dilution and alpha-tubulin antibody (red) at 1: 2500.

Background

This gene maps in a region, which include the mixed lineage leukemia and Friend leukemia virus integration 1 genes, where multiple disease-associated chromosome translocations occur. It is an intracellular protein. Archain sequences are well conserved among eukaryotes and this protein may play a fundamental role in eukaryotic cell biology. It has similarities to heat shock proteins and clathrin-associated proteins, and may be involved in vesicle structure or trafficking. [provided by RefSeq]

Note: This product is for in vitro research use only and is not intended for use in humans or animals.