

# ClpP antibody

Catalog No: #22450



Orders: [order@signalwayantibody.com](mailto:order@signalwayantibody.com)

Support: [tech@signalwayantibody.com](mailto:tech@signalwayantibody.com)

## Description

Product Name	ClpP antibody
Host Species	Rabbit
Clonality	Polyclonal
Purification	Purified by antigen-affinity chromatography.
Applications	WB IHC
Species Reactivity	Hu
Immunogen Type	Peptide
Immunogen Description	Synthetic peptide contain a sequence corresponding to a region within amino acids 215 and 277 of Human CLPP
Target Name	ClpP
Accession No.	NCBI Gene ID: 8192NCBI mRNA#: NM_006012NCBI Protein#: NP_006003
Formulation	Supplied in 0.1M Tris-buffered saline with 10% Glycerol (pH7.0). 0.01% Thimerosal was added as a preservative.
Storage	Store at -20°C for long term preservation (recommended). Store at 4°C for short term use.

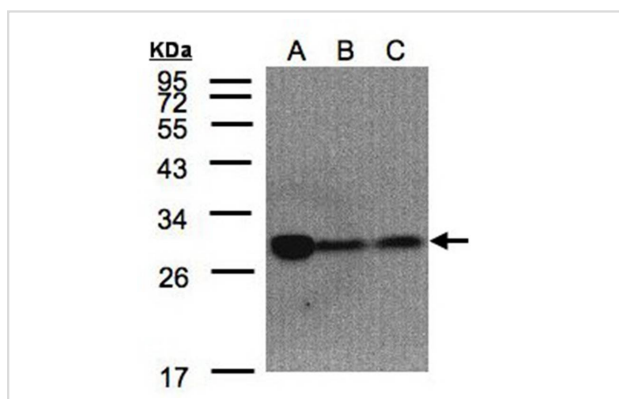
## Application Details

Predicted MW: 30kd

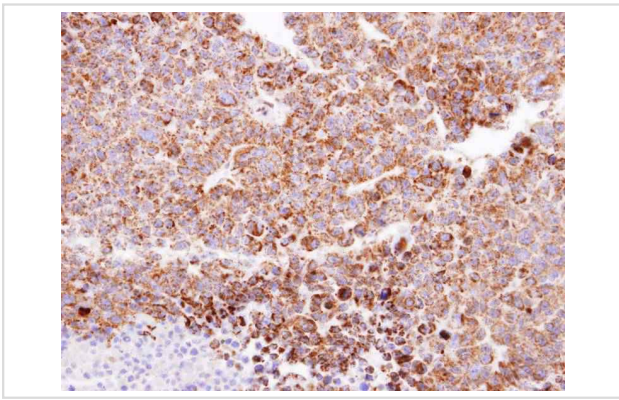
Western blotting: 1:500-1:3000

Immunohistochemistry: 1:100-1:250

## Images



Sample(30 ug of whole cell lysate)  
 A: 293T  
 B: A431  
 C: H1299  
 10% SDS PAGE  
 Primary antibody diluted at 1: 1500



Immunohistochemical analysis of paraffin-embedded H520 xenograft, using CLPP antibody at 1: 100 dilution.

## Background

The protein encoded by this gene belongs to the peptidase family S14 and hydrolyzes proteins into small peptides in the presence of ATP and magnesium. The protein is transported into mitochondrial matrix and is associated with the inner mitochondrial membrane. [provided by RefSeq]

Note: This product is for in vitro research use only and is not intended for use in humans or animals.