

## PCAF antibody

Catalog No: #22442



Orders: order@signalwayantibody.com

Support: tech@signalwayantibody.com

## Description

Product Name	PCAF antibody
Host Species	Rabbit
Clonality	Polyclonal
Purification	Purified by antigen-affinity chromatography.
Applications	WB
Species Reactivity	Hu
Immunogen Type	Peptide
Immunogen Description	Synthetic peptide contain a sequence corresponding to a region within amino acids 767 and 832 of PCAF
Target Name	PCAF
Accession No.	NCBI Gene ID: 8850NCBI mRNA#: NM_003884NCBI Protein#: NP_003875
Formulation	Supplied in 0.1M Tris-buffered saline with 10% Glycerol (pH7.0). 0.01% Thimerosal was added as a preservative.
Storage	Store at -20°C for long term preservation (recommended). Store at 4°C for short term use.

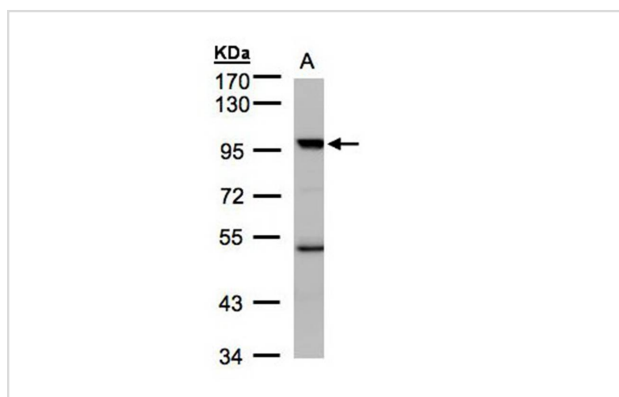
## Application Details

Predicted MW: 93kd

Western blotting: 1:500-1:3000

Immunofluorescence: 1:100-1:200

## Images



Sample(30 ug whole cell lysate)  
 A: Hep G2  
 7.5% SDS PAGE  
 Primary antibody diluted at 1: 1000

## Background

CBP and p300 are large nuclear proteins that bind to many sequence-specific factors involved in cell growth and/or differentiation, including c-jun and the adenoviral oncoprotein E1A. The protein encoded by this gene associates with p300/CBP. It has in vitro and in vivo binding activity with CBP and p300, and competes with E1A for binding sites in p300/CBP. It has histone acetyl transferase activity with core histones and nucleosome core particles, indicating that this protein plays a direct role in transcriptional regulation. [provided by RefSeq]

---

Note: This product is for in vitro research use only and is not intended for use in humans or animals.