

Radixin antibody

Catalog No: #22325

Orders: order@signalwayantibody.com

Support: tech@signalwayantibody.com

Description

Product Name	Radixin antibody
Host Species	Rabbit
Clonality	Polyclonal
Purification	Purified by antigen-affinity chromatography.
Applications	WB IHC IF
Species Reactivity	Hu
Immunogen Type	Recombinant protein
Immunogen Description	Recombinant protein fragment contain a sequence corresponding to a region within amino acids 95 and 444 of Radixin
Target Name	Radixin
Other Names	DFNB24
Accession No.	NCBI Gene ID: 5962NCBI mRNA#: NM_002906NCBI Protein#: NP_002897
Formulation	Supplied in 0.1M Tris-buffered saline with 10% Glycerol (pH7.0). 0.01% Thimerosal was added as a preservative.
Storage	Store at -20°C for long term preservation (recommended). Store at 4°C for short term use.

Application Details

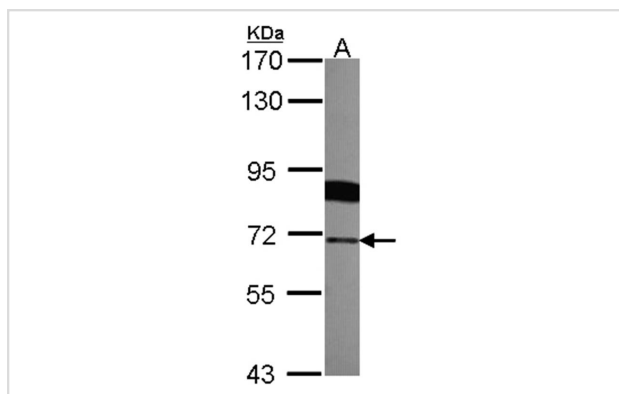
Predicted MW: 69kd

Western blotting: 1:500-1:3000

Immunohistochemistry: 1:50-1:500

Immunofluorescence: 1:100-1:200

Images

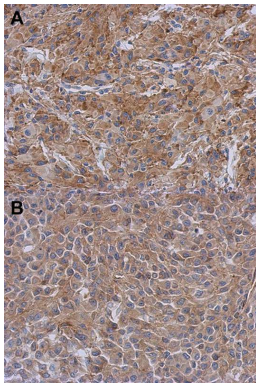


Sample (30 ug of whole cell lysate)

A: 293T

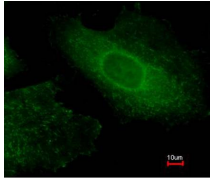
7.5% SDS PAGE

Primary antibody diluted at 1: 5000

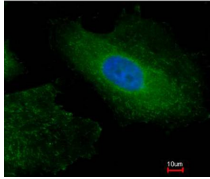


A:Immunohistochemical analysis of paraffin-embedded U373 xenograft, using Radixin antibody at 1: 500 dilution.

B:Immunohistochemical analysis of paraffin-embedded RT2 xenograft, using Radixin antibody at 1: 500 dilution.



Merged with DNA probe



Immunofluorescence analysis of paraformaldehyde-fixed HeLa, using Radixin antibody at 1: 200 dilution.

Background

Radixin is a cytoskeletal protein that may be important in linking actin to the plasma membrane. It is highly similar in sequence to both ezrin and moesin. The radixin gene has been localized by fluorescence in situ hybridization to 11q23. A truncated version representing a pseudogene (RDXP2) was assigned to Xp21.3. Another pseudogene that seemed to lack introns (RDXP1) was mapped to 11p by Southern and PCR analyses. [provided by RefSeq]

Note: This product is for in vitro research use only and is not intended for use in humans or animals.