

ARSA antibody

Catalog No: #22314

Orders: order@signalwayantibody.com

Support: tech@signalwayantibody.com

Description

Product Name	ARSA antibody
Host Species	Rabbit
Clonality	Polyclonal
Purification	Purified by antigen-affinity chromatography.
Applications	WB IHC IF
Species Reactivity	Hu
Immunogen Type	Recombinant protein
Immunogen Description	Recombinant protein fragment contain a sequence corresponding to a region within amino acids 45 and 249 of ARSA
Target Name	ARSA
Accession No.	NCBI Gene ID: 439NCBI mRNA#: BC002651NCBI Protein#: AAH02651
Formulation	Supplied in 0.1M Tris-buffered saline with 20% Glycerol (pH7.0). 0.01% Thimerosal was added as a preservative.
Storage	Store at -20°C for long term preservation (recommended). Store at 4°C for short term use.

Application Details

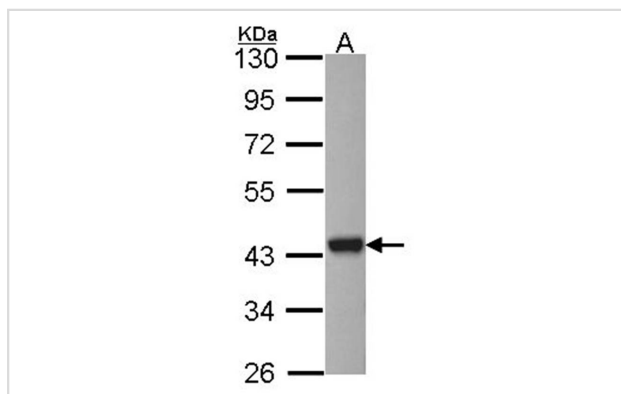
Predicted MW: 39kd

Western blotting: 1:500-1:3000

Immunohistochemistry: 1:100-1:500

Immunofluorescence: 1:100-1:200

Images

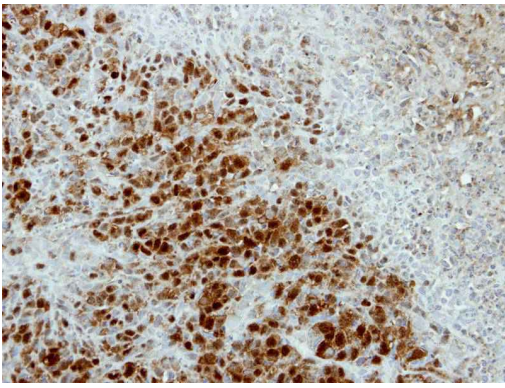


Sample (30 ug of whole cell lysate)

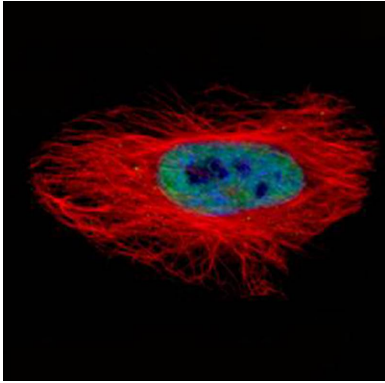
A: HCT116

10% SDS PAGE

Primary antibody diluted at 1: 1000



Immunohistochemical analysis of paraffin-embedded SCM1 xenograft, using ARSA antibody at 1: 500 dilution.



Confocal immunofluorescence analysis (Olympus FV10i) of paraformaldehyde-fixed HeLa, using ASNA1 antibody (Green) at 1: 500 dilution and alpha-tubulin antibody (Red) at 1: 2500.

Background

ASNA1 is the human homolog of the bacterial *arsA* gene. In *E. coli*, ArsA ATPase is the catalytic component of a multisubunit oxyanion pump that is responsible for resistance to arsenicals and antimonials.[supplied by OMIM]

Note: This product is for in vitro research use only and is not intended for use in humans or animals.