

PIGR antibody

Catalog No: #22269



Orders: order@signalwayantibody.com

Support: tech@signalwayantibody.com

Description

Product Name	PIGR antibody
Host Species	Rabbit
Clonality	Polyclonal
Purification	Purified by antigen-affinity chromatography.
Applications	WB IHC IF
Species Reactivity	Hu
Immunogen Type	Recombinant protein
Immunogen Description	Recombinant protein fragment contain a sequence corresponding to a region within amino acids 180 and 429 of PIGR
Target Name	PIGR
Accession No.	NCBI Gene ID: 5284NCBI mRNA#: NM_002644NCBI Protein#: NP_002635
Formulation	Supplied in 0.1M Tris-buffered saline with 10% Glycerol (pH7.0). 0.01% Thimerosal was added as a preservative.
Storage	Store at -20°C for long term preservation (recommended). Store at 4°C for short term use.

Application Details

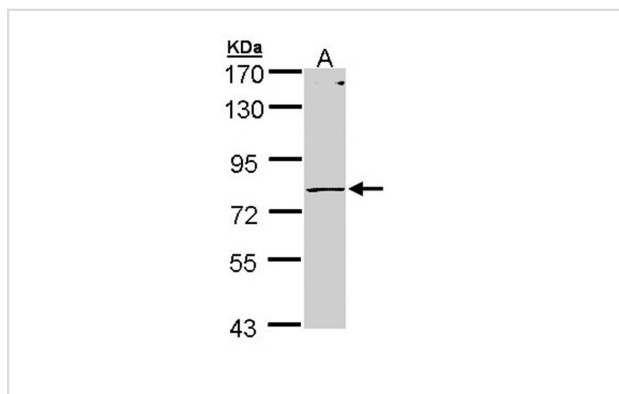
Predicted MW: 83kd

Western blotting: 1:500-1:3000

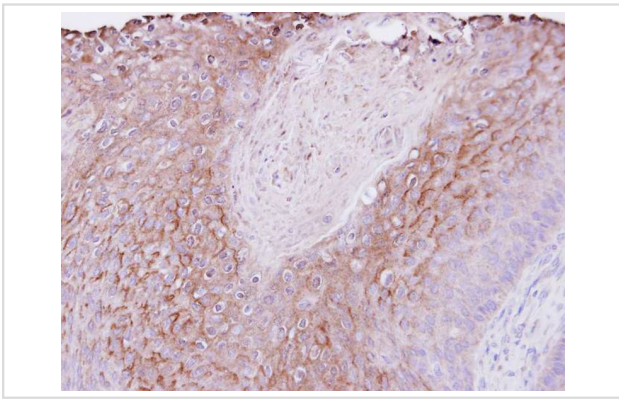
Immunohistochemistry: 1:100-1:500

Immunofluorescence: 1:100-1:200

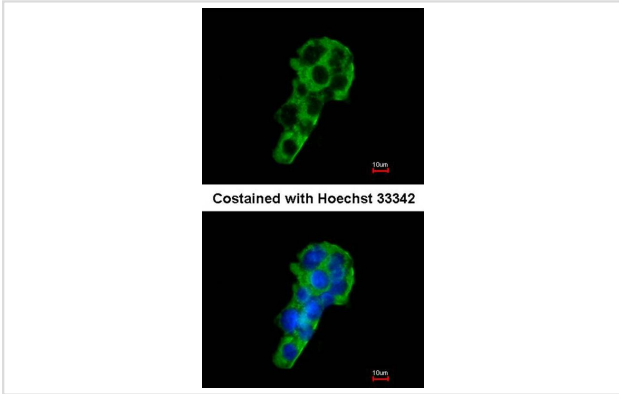
Images



Sample (30 ug of whole cell lysate)
 A: Molt-4
 7.5% SDS PAGE
 Primary antibody diluted at 1: 1000



Immunohistochemical analysis of paraffin-embedded Cal27 xenograft, using PIGR antibody at 1: 500 dilution.



Immunofluorescence analysis of methanol-fixed HepG2, using PIGR antibody at 1: 200 dilution.

Background

The poly-Ig receptor is expressed on several glandular epithelia including those of liver and breast. It mediates transcellular transport of polymeric immunoglobulin molecules. It is a member of the immunoglobulin superfamily (Hood et al., 1985 [PubMed 3917857]). The receptor has 5 units with homology to the variable (V) units of immunoglobulins and a transmembrane region, which also has some homology to certain immunoglobulin variable regions.[supplied by OMIM]

Note: This product is for in vitro research use only and is not intended for use in humans or animals.