

SRPX antibody

Catalog No: #22252

Orders: order@signalwayantibody.comSupport: tech@signalwayantibody.com

Description

Product Name	SRPX antibody
Host Species	Rabbit
Clonality	Polyclonal
Purification	Purified by antigen-affinity chromatography.
Applications	WB IF
Species Reactivity	Hu
Immunogen Type	Recombinant protein
Immunogen Description	Recombinant protein fragment contain a sequence corresponding to a region within amino acids 231 and 434 of SRPX
Target Name	SRPX
Accession No.	NCBI Gene ID: 8406NCBI mRNA#: BC020684NCBI Protein#: AAH20684
Formulation	Supplied in 0.1M Tris-buffered saline with 20% Glycerol (pH7.0). 0.01% Thimerosal was added as a preservative.
Storage	Store at -20°C for long term preservation (recommended). Store at 4°C for short term use.

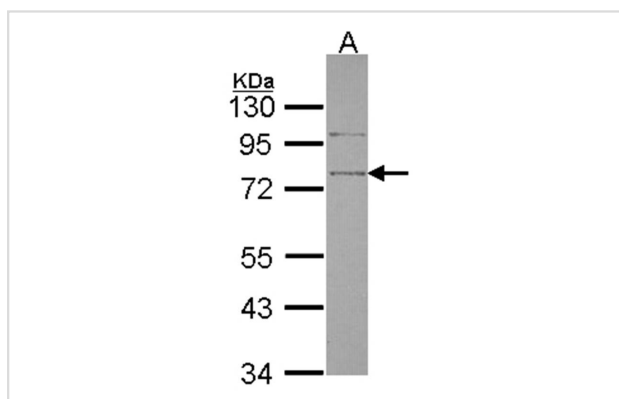
Application Details

Predicted MW: 52kd

Western blotting: 1:500-1:3000

Immunofluorescence: 1:100-1:200

Images



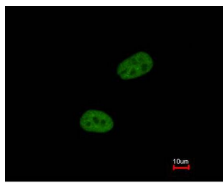
Sample (30 ug of whole cell lysate)

A: HeLa

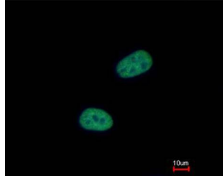
10% SDS PAGE

Primary antibody diluted at 1: 1000

Immunofluorescence analysis of paraformaldehyde-fixed HeLa, using SRPX antibody at 1: 500 dilution.



Costained with Hoechst 33342



Background

May be involved in phagocytosis during disk shedding, cell adhesion to cells other than the pigment epithelium or signal transduction.

Note: This product is for in vitro research use only and is not intended for use in humans or animals.