

Phosphomannomutase 2 antibody

Catalog No: #22237



Orders: order@signalwayantibody.com

Support: tech@signalwayantibody.com

Description

Product Name	Phosphomannomutase 2 antibody
Host Species	Rabbit
Clonality	Polyclonal
Purification	Purified by antigen-affinity chromatography.
Applications	WB IHC
Species Reactivity	Hu
Immunogen Type	Recombinant protein
Immunogen Description	Recombinant protein fragment contain a sequence corresponding to a region within amino acids 1 and 174 (O15305) of PMM2
Target Name	Phosphomannomutase 2
Accession No.	NCBI Gene ID: 5373 NCBI mRNA#: BC008310 NCBI Protein#: AAH08310
Formulation	Supplied in 0.1M Tris-buffered saline with 20% Glycerol (pH7.0). 0.01% Thimerosal was added as a preservative.
Storage	Store at -20°C for long term preservation (recommended). Store at 4°C for short term use.

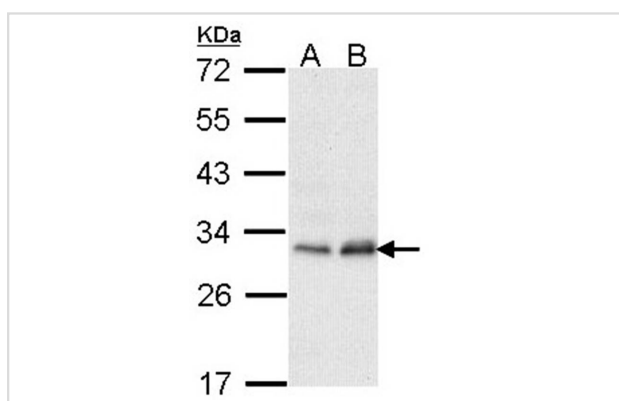
Application Details

Predicted MW: 28kd

Western blotting: 1:500-1:3000

Immunohistochemistry: 1:100-1:250

Images



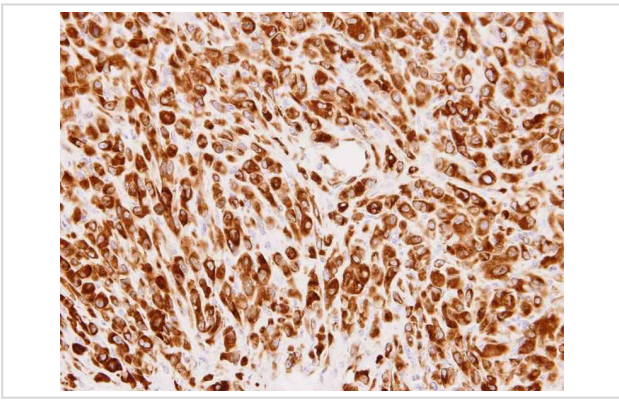
Sample (30 ug of whole cell lysate)

A: HeLa

B: Hep G2

12% SDS PAGE

Primary antibody diluted at 1: 1000



Immunohistochemical analysis of paraffin-embedded U87 xenograft, using PMM2 antibody at 1: 100 dilution.

Background

The protein encoded by this gene catalyzes the isomerization of mannose 6-phosphate to mannose 1-phosphate, which is a precursor to GDP-mannose necessary for the synthesis of dolichol-P-oligosaccharides. Mutations in this gene have been shown to cause defects in glycoprotein biosynthesis, which manifests as carbohydrate-deficient glycoprotein syndrome type I. [provided by RefSeq]

Note: This product is for in vitro research use only and is not intended for use in humans or animals.