

PGD antibody

Catalog No: #22221

Orders: order@signalwayantibody.com

Support: tech@signalwayantibody.com

Description

| | |
|-----------------------|---|
| Product Name | PGD antibody |
| Host Species | Rabbit |
| Clonality | Polyclonal |
| Purification | Purified by antigen-affinity chromatography. |
| Applications | WB IF |
| Species Reactivity | Hu |
| Immunogen Type | Recombinant protein |
| Immunogen Description | Recombinant protein fragment contain a sequence corresponding to a region within amino acids 1 and 171 of Human PGD |
| Target Name | PGD |
| Accession No. | NCBI Gene ID: 5226NCBI mRNA#: NM_002631NCBI Protein#: NP_002622 |
| Formulation | Supplied in 0.1M Tris-buffered saline with 10% Glycerol (pH7.0). 0.01% Thimerosal was added as a preservative. |
| Storage | Store at -20°C for long term preservation (recommended). Store at 4°C for short term use. |

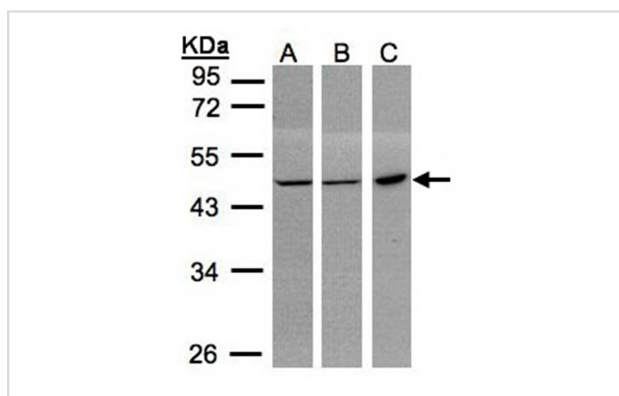
Application Details

Predicted MW: 53kd

Western blotting: 1:500-1:3000

Immunofluorescence: 1:100-1:200

Images



Sample(30 ug whole cell lysate)

A: 293T

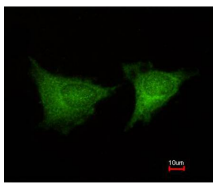
B: MOLT4

C: Raji

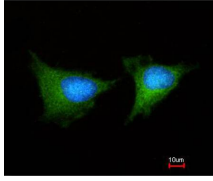
10% SDS PAGE

Primary antibody diluted at 1: 1000

Immunofluorescence analysis of methanol-fixed HeLa, using PGD antibody at 1: 100 dilution.



Costained with Hoechst 33342



Background

6-phosphogluconate dehydrogenase is the second dehydrogenase in the pentose phosphate shunt. Deficiency of this enzyme is generally asymptomatic, and the inheritance of this disorder is autosomal dominant. Hemolysis results from combined deficiency of 6-phosphogluconate dehydrogenase and 6-phosphogluconolactonase suggesting a synergism of the two enzymopathies. [provided by RefSeq]

Note: This product is for in vitro research use only and is not intended for use in humans or animals.