

## OSGEP antibody

Catalog No: #22180

Orders: order@signalwayantibody.com

Support: tech@signalwayantibody.com

## Description

Product Name	OSGEP antibody
Host Species	Rabbit
Clonality	Polyclonal
Purification	Purified by antigen-affinity chromatography.
Applications	WB IHC
Species Reactivity	Hu
Immunogen Type	Recombinant protein
Immunogen Description	Recombinant protein fragment contain a sequence corresponding to a region within amino acids 140 and 332 of Human OSGEP
Target Name	OSGEP
Other Names	FLJ20411; GCPL1; KAE1; OSGEP1; PRSMG1
Accession No.	NCBI Gene ID: 55644NCBI mRNA#: NM_017807NCBI Protein#: NP_060277
Formulation	Supplied in 0.1M Tris-buffered saline with 10% Glycerol (pH7.0). 0.01% Thimerosal was added as a preservative.
Storage	Store at -20°C for long term preservation (recommended). Store at 4°C for short term use.

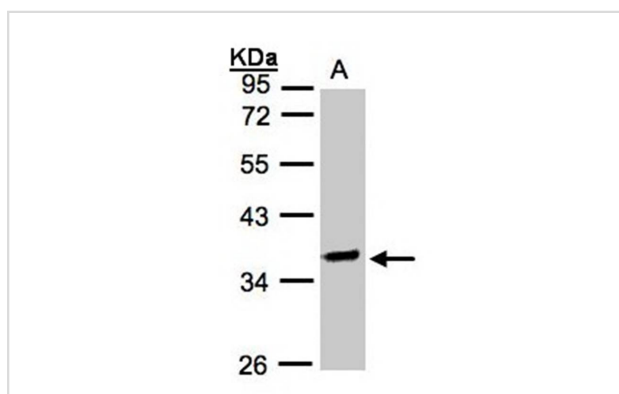
## Application Details

Predicted MW: 36kd

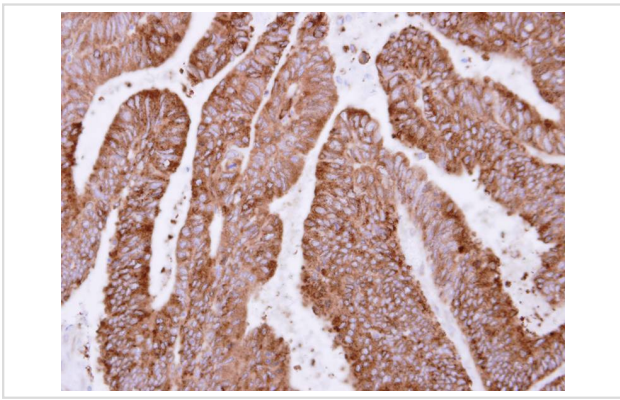
Western blotting: 1:500-1:3000

Immunohistochemistry: 1:50-1:500

## Images



Sample(30 ug whole cell lysate)  
 A: Raji  
 10% SDS PAGE  
 Primary antibody diluted at 1: 2000



Immunohistochemical analysis of paraffin-embedded Colon ca, using OSGEP antibody at 1: 500 dilution.

---

Note: This product is for in vitro research use only and is not intended for use in humans or animals.