

Importin 13 antibody

Catalog No: #22054

Orders: order@signalwayantibody.comSupport: tech@signalwayantibody.com

Description

Product Name	Importin 13 antibody
Host Species	Rabbit
Clonality	Polyclonal
Purification	Purified by antigen-affinity chromatography.
Applications	WB IHC IF IP
Species Reactivity	Hu
Immunogen Type	Peptide
Immunogen Description	Synthetic peptide contain a sequence corresponding to a region within amino acids 901 and 963 of Importin 13
Target Name	Importin 13
Other Names	IMP13; KAP13; RANBP13; KIAA0724
Accession No.	NCBI Gene ID: 9670NCBI mRNA#: NM_014652NCBI Protein#: NP_055467
Formulation	Supplied in 0.1M Tris-buffered saline with 10% Glycerol (pH7.0). 0.01% Thimerosal was added as a preservative.
Storage	Store at -20°C for long term preservation (recommended). Store at 4°C for short term use.

Application Details

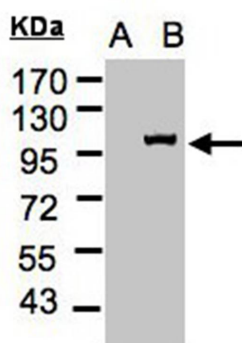
Predicted MW: 108kd

Western blotting: 1:500-1:3000

Immunohistochemistry: 1:100-1:250

Immunofluorescence: 1:100-1:200

Images



Western Blot analysis of IPO13 expression in transfected

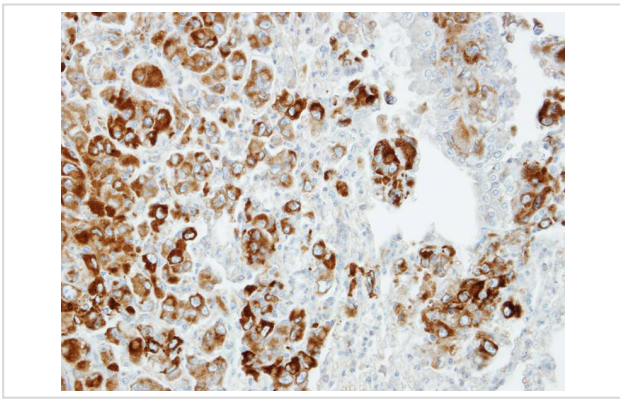
293T cell line by IPO13 polyclonal antibody.

A: Non-transfected lysate.

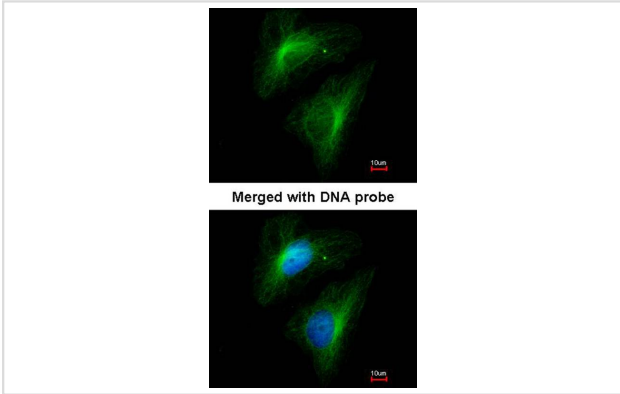
B: IPO13 transfected lysate.

7.5% SDS PAGE

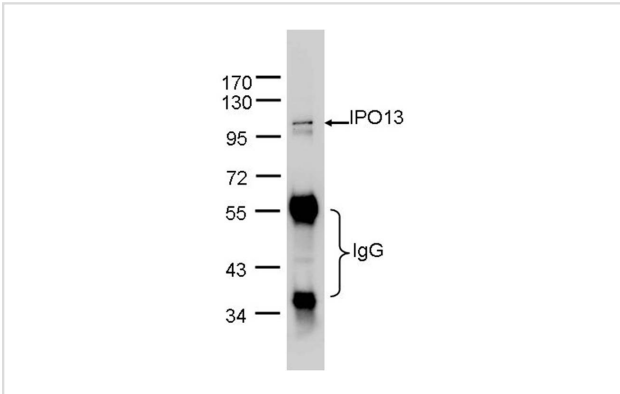
Primary antibody diluted at 1: 500



Immunohistochemical analysis of paraffin-embedded CL1-5 xenograft, using Importin 13 antibody at 1: 100 dilution.



Immunofluorescence analysis of paraformaldehyde-fixed HeLa, using Importin 13 antibody at 1: 200 dilution.



Importin 13 antibody [C3], C-term
IPO13 was immunoprecipitated from 1mg of HeLa whole cell lysate using 10 µg of anti-IPO13 antibody .
The precipitated IPO13 was detected by primary antibody diluted at 1:1000.

Background

This gene encodes a member of the importin-beta family of nuclear transport proteins. The encoded protein mediates the import of specific cargo proteins from the cytoplasm to the nucleus and is dependent on the Ras-related nuclear protein-GTPase system. The encoded protein is also involved in nuclear export of the eukaryotic translation initiation factor 1A.

Note: This product is for in vitro research use only and is not intended for use in humans or animals.