

MPI antibody

Catalog No: #22051



Orders: order@signalwayantibody.com

Support: tech@signalwayantibody.com

Description

Product Name	MPI antibody
Host Species	Rabbit
Clonality	Polyclonal
Purification	Purified by antigen-affinity chromatography.
Applications	WB IHC
Species Reactivity	Hu
Immunogen Type	Recombinant protein
Immunogen Description	Recombinant protein fragment contain a sequence corresponding to a region within amino acids 150 and 409 of Human MPI
Target Name	MPI
Accession No.	NCBI Gene ID: 4351NCBI mRNA#: NM_002435NCBI Protein#: NP_002426
Formulation	Supplied in 0.1M Tris-buffered saline with 10% Glycerol (pH7.0). 0.01% Thimerosal was added as a preservative.
Storage	Store at -20°C for long term preservation (recommended). Store at 4°C for short term use.

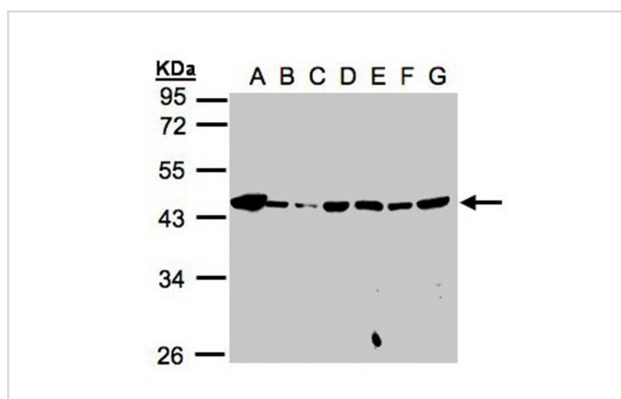
Application Details

Predicted MW: 47kd

Western blotting: 1:500-1:3000

Immunohistochemistry: 1:100-1:250

Images



Sample(30ug whole cell lysate)

A: 293T

B: A431

C: H1299

D: HeLa S3

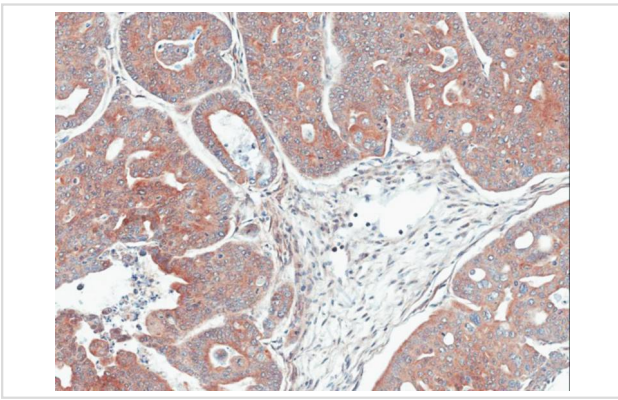
E: Hep G2

F: MOLT4

G: Raji

10% SDS PAGE

Primary antibody diluted at 1: 1000



Immunohistochemical analysis of paraffin-embedded Gastric CA N87 xenograft, using MPI antibody at 1: 100 dilution.

Background

Phosphomannose isomerase catalyzes the interconversion of fructose-6-phosphate and mannose-6-phosphate and plays a critical role in maintaining the supply of D-mannose derivatives, which are required for most glycosylation reactions. Mutations in the MPI gene were found in patients with carbohydrate-deficient glycoprotein syndrome, type Ib. [provided by RefSeq]

Note: This product is for in vitro research use only and is not intended for use in humans or animals.