

PRKCSH antibody

Catalog No: #22041

Orders: order@signalwayantibody.com

Support: tech@signalwayantibody.com

Description

Product Name	PRKCSH antibody
Host Species	Rabbit
Clonality	Polyclonal
Purification	Purified by antigen-affinity chromatography.
Applications	WB IF
Species Reactivity	Hu
Immunogen Type	Recombinant protein
Immunogen Description	Recombinant protein fragment contain a sequence corresponding to a region within amino acids 1 and 253 of Human PRKCSH
Target Name	PRKCSH
Other Names	AGE-R2; G19P1; PCLD
Accession No.	NCBI Gene ID: 5589NCBI mRNA#: NM_002743NCBI Protein#: NP_002734
Formulation	Supplied in 0.1M Tris-buffered saline with 20% Glycerol (pH7.0). 0.01% Thimerosal was added as a preservative.
Storage	Store at -20°C for long term preservation (recommended). Store at 4°C for short term use.

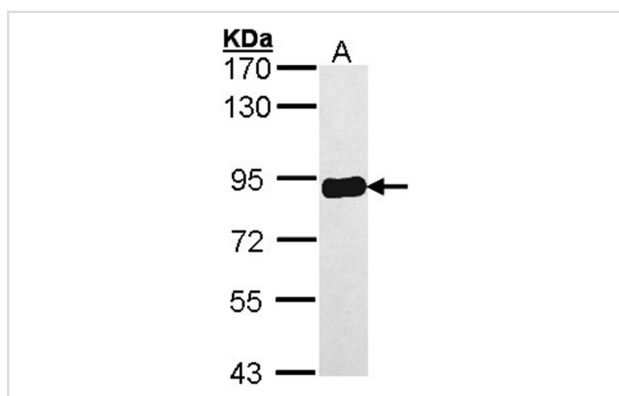
Application Details

Predicted MW: 59kd

Western blotting: 1:500-1:3000

Immunofluorescence: 1:100-1:200

Images



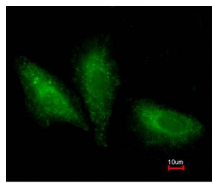
Sample (30 ug of whole cell lysate)

A: A431

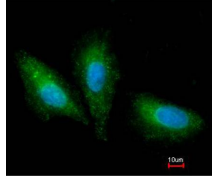
7.5% SDS PAGE

Primary antibody diluted at 1: 10000

Immunofluorescence analysis of paraformaldehyde-fixed A549, using PRKCSH antibody at 1: 200 dilution.



Costained with Hoechst 33342



Background

This gene encodes the beta-subunit of glucosidase II, an N-linked glycan-processing enzyme in the endoplasmic reticulum (ER). This protein is an acidic phospho-protein known to be a substrate for protein kinase C. Mutations in this gene have been associated with the autosomal dominant polycystic liver disease (PCLD). Alternatively spliced transcript variants encoding distinct isoforms have been observed. [provided by RefSeq]

Note: This product is for in vitro research use only and is not intended for use in humans or animals.