

## SPR antibody

Catalog No: #22028

Orders: order@signalwayantibody.com

Support: tech@signalwayantibody.com

## Description

Product Name	SPR antibody
Host Species	Rabbit
Clonality	Polyclonal
Purification	Purified by antigen-affinity chromatography.
Applications	WB IF
Species Reactivity	Hu
Immunogen Type	Recombinant protein
Immunogen Description	Recombinant protein fragment contain a sequence corresponding to a region within amino acids 65 and 253 of Human SPR
Target Name	SPR
Accession No.	NCBI Gene ID: 6697NCBI mRNA#: BC017310NCBI Protein#: AAH17310
Formulation	Supplied in 0.1M Tris-buffered saline with 20% Glycerol (pH7.0). 0.01% Thimerosal was added as a preservative.
Storage	Store at -20°C for long term preservation (recommended). Store at 4°C for short term use.

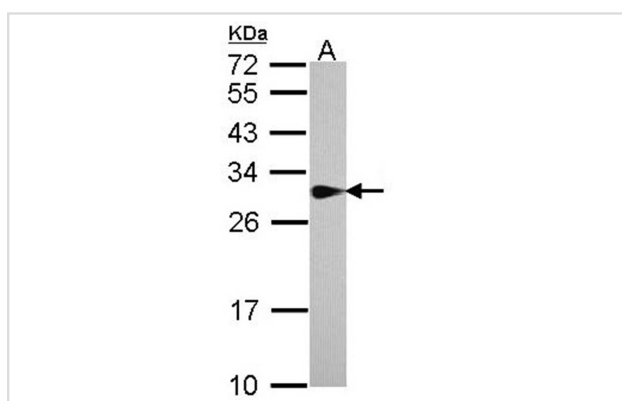
## Application Details

Predicted MW: 28kd

Western blotting: 1:500-1:3000

Immunofluorescence: 1:100-1:200

## Images

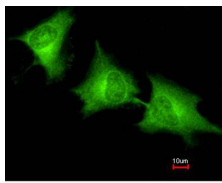


Sample (30 ug of whole cell lysate)

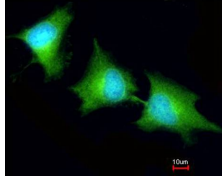
A: A431

12% SDS PAGE

Primary antibody diluted at 1: 1000



Costained with Hoechst 33342



Immunofluorescence analysis of methanol-fixed HeLa, using SPR antibody at 1: 200 dilution.

## Background

This gene encodes an aldo-keto reductase that catalyzes the NADPH-dependent reduction of pteridine derivatives and is important in the biosynthesis of tetrahydrobiopterin (BH4). Mutations in this gene result in DOPA-responsive dystonia due to sepiaterin reductase deficiency. A pseudogene has been identified on chromosome 1. [provided by RefSeq]

Note: This product is for in vitro research use only and is not intended for use in humans or animals.