

ABCA1 Antibody

Catalog No: #21676

Package Size: #21676-1 50ul #21676-2 100ul #21676-4 25ul

Orders: order@signalwayantibody.comSupport: tech@signalwayantibody.com

Description

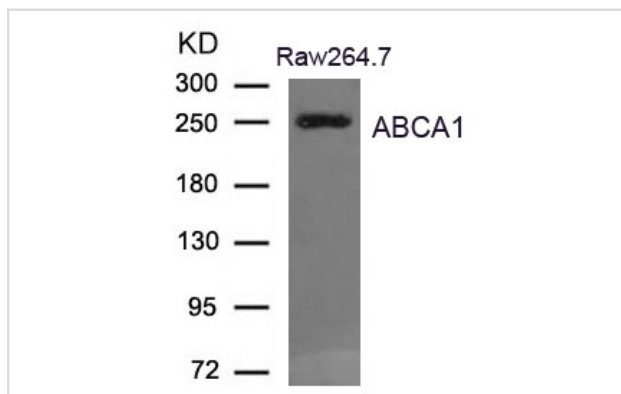
Product Name	ABCA1 Antibody
Host Species	Rabbit
Clonality	Polyclonal
Purification	Antibodies were produced by immunizing rabbits with synthetic peptide and KLH conjugates. Antibodies were purified by affinity-chromatography using epitope-specific peptide.
Applications	WB
Species Reactivity	Hu Ms Rt
Specificity	The antibody detects endogenous level of total ABCA1 protein.
Immunogen Type	Peptide-KLH
Immunogen Description	Peptide sequence around aa.2253~2257(D-E-K-V-K) derived from Human ABCA1.
Target Name	ABCA1
Other Names	TGD; ABC1; CERP; ABC-1;
Accession No.	Swiss-Prot: O95477NCBI Protein: NP_005493.2
Concentration	1.0mg/ml
Formulation	Supplied at 1.0mg/mL in phosphate buffered saline (without Mg ²⁺ and Ca ²⁺), pH 7.4, 150mM NaCl, 0.02% sodium azide and 50% glycerol.
Storage	Store at -20°C for long term preservation (recommended). Store at 4°C for short term use.

Application Details

Predicted MW: 254kd

Western blotting: 1:500~1:1000

Images



Western blot analysis of extract from Raw264.7 cells using ABCA1 Antibody #21676

Background

cAMP-dependent and sulfonylurea-sensitive anion transporter. Key gatekeeper influencing intracellular cholesterol transport.

Kaplan R., Gan X., Menke J.G. Lipid Res. 43:952-959(2002)

Hamon Y., Trompier D., Ma Z., Venegas V. PLoS ONE 1:E120-E120(2006)

Singaraja R.R., Kang M.H., Vaid K. Berthiaume L. Res. 105:138-147(2009)

Note: This product is for in vitro research use only and is not intended for use in humans or animals.