

## Adiponectin Antibody

Catalog No: #21665

Package Size: #21665-1 50ul #21665-2 100ul #21665-4 25ul

Orders: order@signalwayantibody.com

Support: tech@signalwayantibody.com

## Description

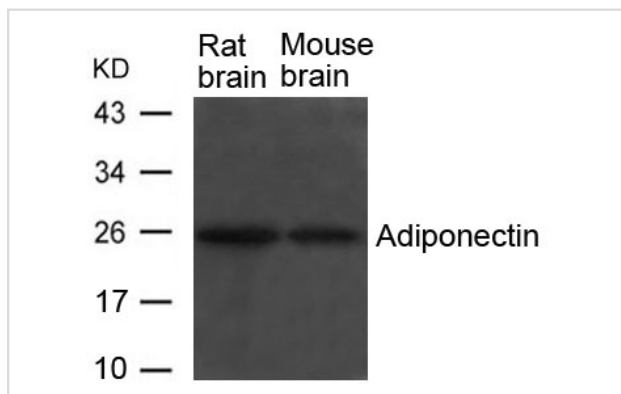
Product Name	Adiponectin Antibody
Host Species	Rabbit
Clonality	Polyclonal
Purification	Antibodies were produced by immunizing rabbits with synthetic peptide and KLH conjugates. Antibodies were purified by affinity-chromatography using epitope-specific peptide.
Applications	WB
Species Reactivity	Hu Ms Rt
Specificity	The antibody detects endogenous level of total Adiponectin protein.
Immunogen Type	Peptide-KLH
Immunogen Description	Peptide sequence around aa.235~239(T-G-F-L-L) derived from Human Adiponectin.
Target Name	Adiponectin
Other Names	ACDC; ADPN; APM1
Accession No.	Swiss-Prot: Q15848NCBI Protein: NP_001171271.1
Concentration	1.0mg/ml
Formulation	Supplied at 1.0mg/mL in phosphate buffered saline (without Mg <sup>2+</sup> and Ca <sup>2+</sup> ), pH 7.4, 150mM NaCl, 0.02% sodium azide and 50% glycerol.
Storage	Store at -20°C for long term preservation (recommended). Store at 4°C for short term use.

## Application Details

Predicted MW: 27kd

Western blotting: 1:500~1:1000

## Images



Western blot analysis of extracts from Rat and Mouse brain tissue using Adiponectin Antibody #21665.

## Background

Important adipokine involved in the control of fat metabolism and insulin sensitivity, with direct anti-diabetic, anti-atherogenic and anti-inflammatory

activities. Stimulates AMPK phosphorylation and activation in the liver and the skeletal muscle, enhancing glucose utilization and fatty-acid combustion. Antagonizes TNF- $\alpha$  by negatively regulating its expression in various tissues such as liver and macrophages, and also by counteracting its effects. Inhibits endothelial NF- $\kappa$ -B signaling through a cAMP-dependent pathway. May play a role in cell growth, angiogenesis and tissue remodeling by binding and sequestering various growth factors with distinct binding affinities, depending on the type of complex, LMW, MMW or HMW.

Yamauchi T., Kamon J., Waki H. Kadowaki T. *Nat. Med.* 7:941-946(2001)

Richards A.A., Stephens T., Charlton H.K. *Mol. Endocrinol.* 20:1673-1687(2006)

---

Note: This product is for in vitro research use only and is not intended for use in humans or animals.