

## Cdx2 Antibody

Catalog No: #21644

Package Size: #21644-1 50ul #21644-2 100ul #21644-4 25ul

Orders: [order@signalwayantibody.com](mailto:order@signalwayantibody.com)Support: [tech@signalwayantibody.com](mailto:tech@signalwayantibody.com)

## Description

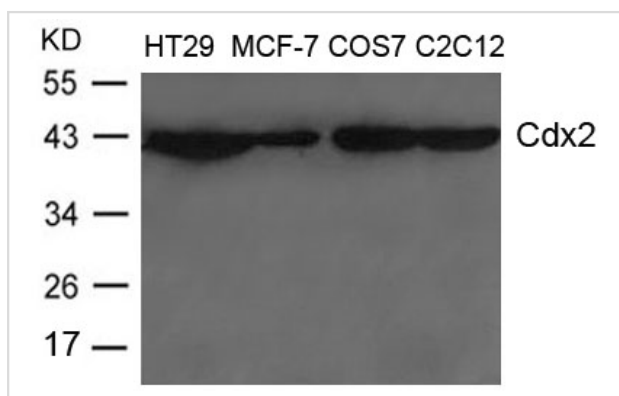
Product Name	Cdx2 Antibody
Host Species	Rabbit
Clonality	Polyclonal
Purification	Antibodies were produced by immunizing rabbits with synthetic peptide and KLH conjugates. Antibodies were purified by affinity-chromatography using epitope-specific peptide.
Applications	WB
Species Reactivity	Hu Ms Rt Mk
Specificity	The antibody detects endogenous levels of total Cdx2 protein.
Immunogen Type	Peptide-KLH
Immunogen Description	Peptide sequence around aa.12~16(S-M-Y-P-S) derived from Human Cdx2
Target Name	Cdx2
Other Names	CDX3, CDX-3
Accession No.	Swiss-Prot: Q99626NCBI Protein: NP_001256.2
SDS-PAGE MW	40kd
Concentration	1.0mg/ml
Formulation	Supplied at 1.0mg/mL in phosphate buffered saline (without Mg <sup>2+</sup> and Ca <sup>2+</sup> ), pH 7.4, 150mM NaCl, 0.02% sodium azide and 50% glycerol.
Storage	Store at -20°C for long term preservation (recommended). Store at 4°C for short term use.

## Application Details

Predicted MW: 40kd

Western blotting: 1:500~1:1000

## Images



Western blot analysis of extracts from HT-29, MCF-7, COS-7 and C2C12 cells using Cdx2 Antibody #21644.

## Background

---

Involved in the transcriptional regulation of multiple genes expressed in the intestinal epithelium. Important in broad range of functions from early differentiation to maintenance of the intestinal epithelial lining of both the small and large intestine.

Inamori K., Takeshita K., Chiba S., Yazaki Y., Hirai H. *Biochem. Biophys. Res. Commun.* 196:203-208(1993)

---

Note: This product is for in vitro research use only and is not intended for use in humans or animals.