

## Neuroserpin Antibody

Catalog No: #21618



Package Size: #21618-1 50ul #21618-2 100ul #21618-4 25ul

Orders: [order@signalwayantibody.com](mailto:order@signalwayantibody.com)Support: [tech@signalwayantibody.com](mailto:tech@signalwayantibody.com)

## Description

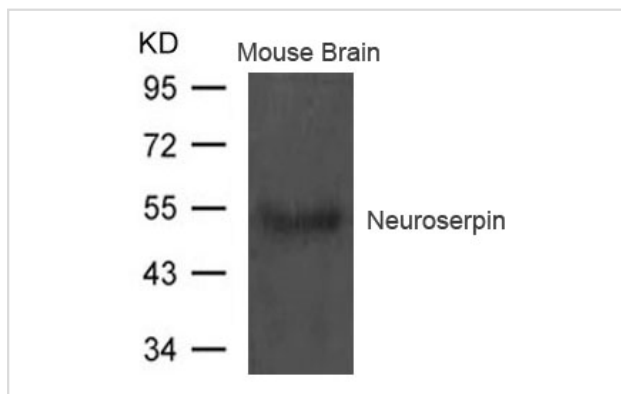
Product Name	Neuroserpin Antibody
Host Species	Rabbit
Clonality	Polyclonal
Purification	Antibodies were produced by immunizing rabbits with synthetic peptide and KLH conjugates. Antibodies were purified by affinity-chromatography using epitope-specific peptide.
Applications	WB
Species Reactivity	Hu Ms Rt
Specificity	The antibody detects endogenous level of total Neuroserpin protein.
Immunogen Type	Peptide-KLH
Immunogen Description	Peptide sequence around aa.402~406(T-S-G-H-D) derived from Human Neuroserpin.
Target Name	Neuroserpin
Other Names	PI12; SERPINI1;
Accession No.	Swiss-Prot: Q99574NCBI Protein: NP_001116224.1
Concentration	1.0mg/ml
Formulation	Supplied at 1.0mg/mL in phosphate buffered saline (without Mg <sup>2+</sup> and Ca <sup>2+</sup> ), pH 7.4, 150mM NaCl, 0.02% sodium azide and 50% glycerol.
Storage	Store at -20°C for long term preservation (recommended). Store at 4°C for short term use.

## Application Details

Predicted MW: 55kd

Western blotting: 1:500~1:1000

## Images



Western blot analysis of extract from Mouse brain tissue using Neuroserpin Antibody #21618

## Background

Serine protease inhibitor that inhibits plasminogen activators and plasmin but not thrombin. May be involved in the formation or reorganization of

synaptic connections as well as for synaptic plasticity in the adult nervous system. May protect neurons from cell damage by tissue-type plasminogen activator.

Davis R.L., Shrimpton A.E., Holohan P.D. Nature 401:376-379(1999)

---

Note: This product is for in vitro research use only and is not intended for use in humans or animals.