

b-catenin Antibody

Catalog No: #21574

Package Size: #21574-1 50ul #21574-2 100ul #21574-4 25ul

Orders: order@signalwayantibody.comSupport: tech@signalwayantibody.com

Description

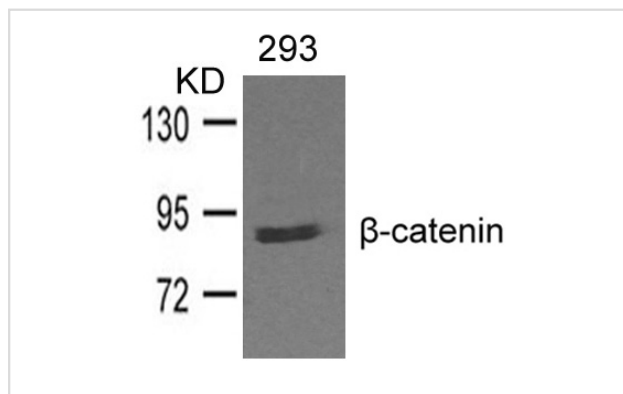
| | |
|-----------------------|---|
| Product Name | b-catenin Antibody |
| Host Species | Rabbit |
| Clonality | Polyclonal |
| Purification | Antibodies were produced by immunizing rabbits with synthetic peptide and KLH conjugates. Antibodies were purified by affinity-chromatography using epitope-specific peptide. |
| Applications | WB |
| Species Reactivity | Human Mouse Rat |
| Specificity | The antibody detects endogenous levels of total b-catenin protein. |
| Immunogen Type | Peptide-KLH |
| Immunogen Description | Peptide sequence around aa. 327~331 (C-I-M-R-T) derived from Human b-catenin |
| Target Name | b-catenin |
| Other Names | CTNNB1; CATNB; CTNB1; CTNNB; |
| Accession No. | Swiss-Prot: P35222NCBI Protein: NP_001091679.1 |
| Concentration | 1.0mg/ml |
| Formulation | Supplied at 1.0mg/mL in phosphate buffered saline (without Mg ²⁺ and Ca ²⁺), pH 7.4, 150mM NaCl, 0.02% sodium azide and 50% glycerol. |
| Storage | Store at -20°C for long term preservation (recommended). Store at 4°C for short term use. |

Application Details

Predicted MW: 92kd

Western blotting: 1:500~1:1000

Images



Western blot analysis of extracts from 293 cells and using b-catenin Antibody #21574.

Background

Involved in the regulation of cell adhesion and in signal transduction through the Wnt pathway.

Published Papers

RONG WAN, RUI GUO, CHENG CHEN et al., Urocortin Increased LPS-Induced Endothelial Permeability by Regulating the CadherinB-Catenin Complex via

Corticotrophin-Releasing Hormone Receptor 2. , JOURNAL OF CELLULAR PHYSIOLOGY., 228: 1295B-C1303(2012)

[PMID:23168683](#)

Note: This product is for in vitro research use only and is not intended for use in humans or animals.