

## EGFR(Ab-1197) Goat Polyclonal Antibody

Catalog No: #21551



Package Size: #21551-1 50ul #21551-2 100ul #21551-4 25ul

Orders: [order@signalwayantibody.com](mailto:order@signalwayantibody.com)Support: [tech@signalwayantibody.com](mailto:tech@signalwayantibody.com)

## Description

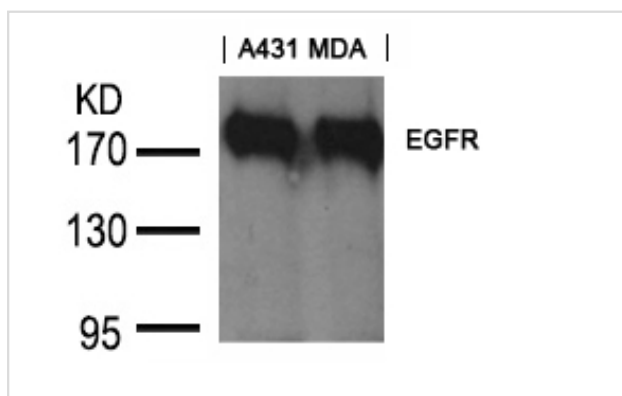
|                       |  |
|-----------------------|--|
| Product Name          | EGFR(Ab-1197) Goat Polyclonal Antibody   |
| Host Species          | Goat   |
| Clonality             | Polyclonal   |
| Purification          | Antibodies were produced by immunizing goat with synthetic peptide and KLH conjugates. Antibodies were purified by affinity-chromatography using epitope-specific peptide. |
| Applications          | WB   |
| Species Reactivity    | Hu Ms Rt   |
| Specificity           | The antibody detects endogenous level of total EGFR protein.   |
| Immunogen Type        | Peptide-KLH  |
| Immunogen Description | Peptide sequence around aa.1195~1199 (A-E-Y-L-R) derived from Human EGFR.  |
| Target Name           | EGFR   |
| Other Names           | Receptor tyrosine-protein kinase ErbB-1; ERBB1; kinase EGFR  |
| Accession No.         | Swiss-Prot: P00533NCBI Protein: NP_005219.2  |
| Concentration         | 1.0mg/ml   |
| Formulation           | Supplied at 1.0mg/mL in phosphate buffered saline (without Mg <sup>2+</sup> and Ca <sup>2+</sup> ), pH 7.4, 150mM NaCl, 0.02% sodium azide and 50% glycerol.               |
| Storage               | Store at -20°C for long term preservation (recommended). Store at 4°C for short term use.  |

## Application Details

Predicted MW: 175kd

Western blotting: 1:500~1:1000

## Images



Western blot analysis of extracts from A431 and MDA cells using EGFR(Ab-1197) goat polyclonal antibody #21551.

## Background

Receptor for EGF, but also for other members of the EGF family, as TGF- $\alpha$ , amphiregulin, betacellulin, heparin-binding EGF-like growth factor, GP30

and vaccinia virus growth factor. Is involved in the control of cell growth and differentia

Corbalan-Garcia S, et al. (1996) Mol Cell Biol; 16(10): 5674-5682

Kanner SB, et al. (1991) Mol Cell Biol; 11(2): 713-720

Wu TT, et al. (1998) Mol Biol Cell; 9(7): 1661-1674

O

---

Note: This product is for in vitro research use only and is not intended for use in humans or animals.