

## VEGFR2(Ab-1059) Antibody

Catalog No: #21531

Package Size: #21531-1 50ul #21531-2 100ul #21531-4 25ul

Orders: order@signalwayantibody.com

Support: tech@signalwayantibody.com

## Description

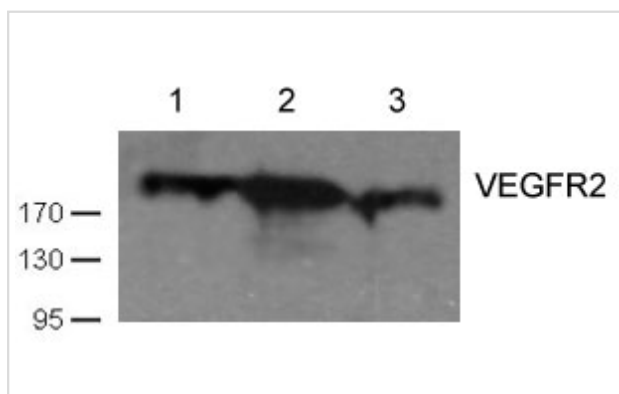
Product Name	VEGFR2(Ab-1059) Antibody
Host Species	Rabbit
Clonality	Polyclonal
Purification	Antibodies were produced by immunizing rabbits with synthetic peptide and KLH conjugates. Antibodies were purified by affinity-chromatography using epitope-specific peptide.
Applications	WB
Species Reactivity	Hu Ms
Specificity	The antibody detects endogenous levels of total VEGFR2 protein.
Immunogen Type	Peptide-KLH
Immunogen Description	Peptide sequence around aa. 1057~1061 (P-D-Y-V-R) derived from Human VEGFR2.
Target Name	VEGFR2
Other Names	FLK1; KDR; VGFR2; VGR2; kinase insert domain receptor
Accession No.	Swiss-Prot: P35968NCBI Protein: NP_002244.1
Concentration	1.0mg/ml
Formulation	Supplied at 1.0mg/mL in phosphate buffered saline (without Mg <sup>2+</sup> and Ca <sup>2+</sup> ), pH 7.4, 150mM NaCl, 0.02% sodium azide and 50% glycerol.
Storage	Store at -20°C for long term preservation (recommended). Store at 4°C for short term use.

## Application Details

Predicted MW: 210 230kd

Western blotting: 1:1000

## Images



Western blot analysis of cell lysates using VEGFR2(Ab-1059) antibody(#21531) Lane 1 and 2: Huvec cell; Lane 3 HT29 cell)

## Background

Receptor for VEGF or VEGFC. Has a tyrosine-protein kinase activity. The VEGF-kinase ligand/receptor signaling system plays a key role in vascular

development and regulation of vascular permeability. In case of HIV-1 infection, the interaction with extracellular viral Tat protein seems to enhance angiogenesis in Kaposi's sarcoma lesions

Zeng H, et al. (2001) J Biol Chem. 276(35): 32714-32719.

Dougher M, et al. (1999) Oncogene. 18(8): 1619-1627.

---

Note: This product is for in vitro research use only and is not intended for use in humans or animals.