

NSE Antibody

Catalog No: #21487

Package Size: #21487-1 50ul #21487-2 100ul #21487-4 25ul

Orders: order@signalwayantibody.com

Support: tech@signalwayantibody.com

Description

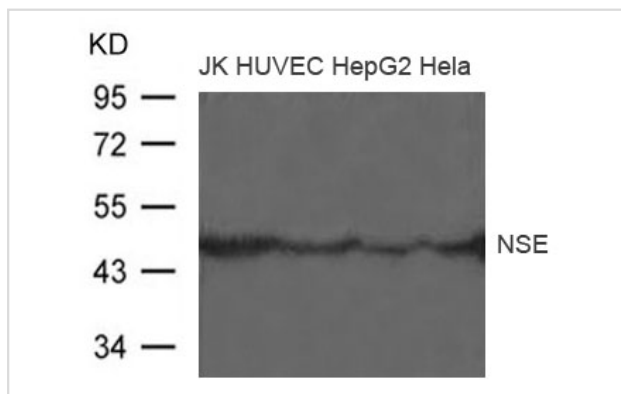
Product Name	NSE Antibody
Host Species	Rabbit
Clonality	Polyclonal
Purification	Antibodies were produced by immunizing rabbits with synthetic peptide and KLH conjugates. Antibodies were purified by affinity-chromatography using epitope-specific peptide.
Applications	WB
Species Reactivity	Hu Ms
Specificity	The antibody detects endogenous level of total NSE protein.
Immunogen Type	Peptide-KLH
Immunogen Description	Peptide sequence around aa.6~10(I-W-A-R-E)derived from Human NSE.
Target Name	NSE
Other Names	ENO2
Accession No.	Swiss-Prot: P09104NCBI Protein: NP_001966.1
Concentration	1.0mg/ml
Formulation	Supplied at 1.0mg/mL in phosphate buffered saline (without Mg ²⁺ and Ca ²⁺), pH 7.4, 150mM NaCl, 0.02% sodium azide and 50% glycerol.
Storage	Store at -20°C for long term preservation (recommended). Store at 4°C for short term use.

Application Details

Predicted MW: 47kd

Western blotting: 1:500~1:1000

Images



Western blot analysis of extract from JK, HUVEC, HepG2 and HeLa cells using NSE Antibody #21487

Background

Has neurotrophic and neuroprotective properties on a broad spectrum of central nervous system (CNS) neurons. Binds, in a calcium-dependent

manner, to cultured neocortical neurons and promotes cell survival.

McAleese S.M., Dunbar B., Fothergill J., Hinks L., Day I.N.M.Eur. J. Biochem. 178:413-417(1988)

Note: This product is for in vitro research use only and is not intended for use in humans or animals.