

#21472

## CD201(EPCR) Antibody

Catalog: #21472-1

50µl

Orders: [order@signalwayantibody.com](mailto:order@signalwayantibody.com)

#21472-2

100µl

Support: [tech@signalwayantibody.com](mailto:tech@signalwayantibody.com)

Storage: Store at -20°C/1 year

Web: [www.signalwayantibody.com](http://www.signalwayantibody.com)

Application	Species Reactivity	Source	Molecular Wt.
WB	Human	Rabbit Polyconal Ab	27KD

**Description:** Antibodies were produced by immunizing rabbits with synthetic peptide and KLH conjugates. Antibodies were purified by affinity-chromatography using epitope-specific peptide.

**Specificity:** The antibody detects endogenous level of total CD201 protein.

**Immunogen:** Peptide sequence around aa.22~26(S-D-G-L-Q) derived from Human CD201 Antibody

**Formulation:** Supplied at 1.0mg/mL in phosphate buffered saline (without Mg<sup>2+</sup> and Ca<sup>2+</sup>), pH 7.4, 150mM NaCl, 0.02% sodium azide and 50% glycerol.

**Synonyms:** EPCR PROCR

**Accession No.:** Swiss-Prot#: Q9UNN8

NCBI Gene#: 10544

NCBI Protein#: NP\_006395.2

**Background:** Binds activated protein C. Enhances protein C activation by the thrombin-thrombomodulin complex; plays a role in the protein C pathway controlling blood coagulation.

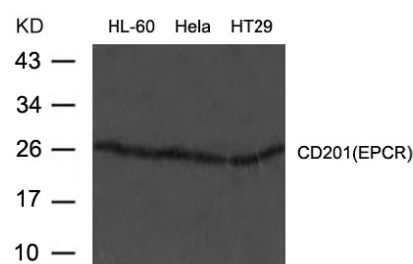
### References:

Oganesyan V.et.al(2002)J. Biol. Chem. 277:24851-24854

Fukudome K.et.al (1994)J. Biol. Chem. 269:26486-26491

### Recommended Dilutions:

Western blotting 1:500~1:1000



Western blot analysis of extract from HL-60, HeLa and HT29 cells using CD201(EPCR) Antibody #21472

### Citation:

If you publish research using #21472 please [let us know](#).

### Related Pathway:

**Note:** For western blotting, incubate membrane with diluted antibody in 5% nonfat milk, 1X TBS, 0.1% Tween-20 at 4°C with gentle shaking, overnight.