

## CD34 Antibody

Catalog No: #21469



Package Size: #21469-1 50ul #21469-2 100ul #21469-4 25ul

Orders: [order@signalwayantibody.com](mailto:order@signalwayantibody.com)Support: [tech@signalwayantibody.com](mailto:tech@signalwayantibody.com)

## Description

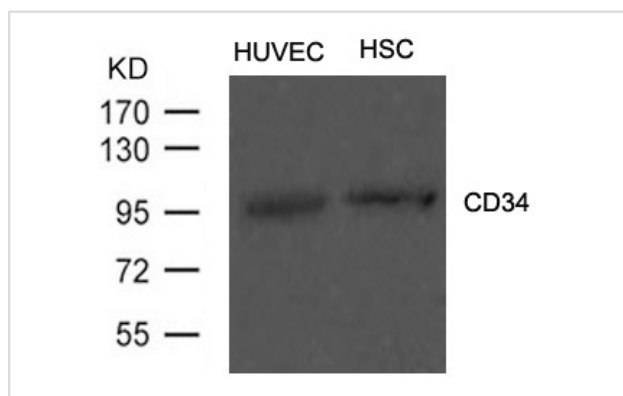
|                       |   |
|-----------------------|---|
| Product Name          | CD34 Antibody   |
| Host Species          | Rabbit  |
| Clonality             | Polyclonal  |
| Purification          | Antibodies were produced by immunizing rabbits with synthetic peptide and KLH conjugates. Antibodies were purified by affinity-chromatography using epitope-specific peptide. |
| Applications          | WB  |
| Species Reactivity    | Hu Ms Rt  |
| Specificity           | The antibody detects endogenous level of total CD34 protein.  |
| Immunogen Type        | Peptide-KLH   |
| Immunogen Description | Peptide sequence around aa.377~381(Q-H-V-V-A) derived from Human CD34.  |
| Target Name           | CD34  |
| Other Names           | CD34  |
| Accession No.         | Swiss-Prot: P28906NCBI Protein: NP_001020280.1  |
| Concentration         | 1.0mg/ml  |
| Formulation           | Supplied at 1.0mg/mL in phosphate buffered saline (without Mg <sup>2+</sup> and Ca <sup>2+</sup> ), pH 7.4, 150mM NaCl, 0.02% sodium azide and 50% glycerol.                  |
| Storage               | Store at -20°C for long term preservation (recommended). Store at 4°C for short term use.   |

## Application Details

Predicted MW: 110kd

Western blotting: 1:500~1:1000

## Images



Western blot analysis of extract from HUVEC cells and Hematopoietic Stem Cells from Umbilical Cord Blood using CD34 Antibody #21469

## Background

Possible adhesion molecule with a role in early hematopoiesis by mediating the attachment of stem cells to the bone marrow extracellular matrix or

directly to stromal cells. Could act as a scaffold for the attachment of lineage specific glycans, allowing stem cells to bind to lectins expressed by stromal cells or other marrow components. Presents carbohydrate ligands to selectins.

Fackler M.J.et.al(1990)Chem. 265:11056-11061

---

Note: This product is for in vitro research use only and is not intended for use in humans or animals.