

## OCT-4 Antibody

Catalog No: #21424

Package Size: #21424-1 50ul #21424-2 100ul #21424-4 25ul

Orders: [order@signalwayantibody.com](mailto:order@signalwayantibody.com)Support: [tech@signalwayantibody.com](mailto:tech@signalwayantibody.com)

## Description

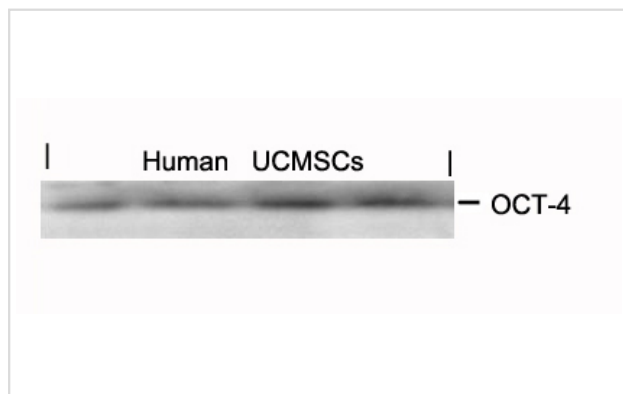
Product Name	OCT-4 Antibody
Host Species	Rabbit
Clonality	Polyclonal
Purification	Antibodies were produced by immunizing rabbits with synthetic peptide and KLH conjugates. Antibodies were purified by affinity-chromatography using epitope-specific peptide.
Applications	WB
Species Reactivity	Hu
Specificity	The antibody detects endogenous level of total OCT-4 protein.
Immunogen Type	Peptide-KLH
Immunogen Description	Peptide sequence around aa.232~236 (R-K-R-T-S) derived from OCT-4
Target Name	OCT-4
Other Names	Otc3; OTF3; OTF4; OTF-3;
Accession No.	Swiss-Prot: Q01860NCBI Protein: NP_002692.2
Concentration	1.0mg/ml
Formulation	Supplied at 1.0mg/mL in phosphate buffered saline (without Mg <sup>2+</sup> and Ca <sup>2+</sup> ), pH 7.4, 150mM NaCl, 0.02% sodium azide and 50% glycerol.
Storage	Store at -20°C for long term preservation (recommended). Store at 4°C for short term use.

## Application Details

Predicted MW: 45kd

Western blotting: 1:1000

## Images



Western blot analysis of extracts from human Umbilical cord mesenchymal stem cell using OCT-4 Antibody #21424.

## Background

Transcription factor that binds to the octamer motif (5'-ATTGTCAT-3'). Forms a trimeric complex with SOX2 on DNA and controls the expression of a

number of genes involved in embryonic development such as YES1, FGF4, UTF1 and ZFP206. Critical for early embryogenesis and for embryonic stem cell pluripotency

Pesce, M. and Scholer, H.R. (2001) Stem Cells 19, 271-278.

Pan, G. and Thomson, J.A. (2007) Cell Res 17, 42-9.

Cauffman, G. et al. (2006) Stem Cells 24, 2685-91.

---

Note: This product is for in vitro research use only and is not intended for use in humans or animals.