

Smad2(Ab-220) Antibody

Catalog No: #21323



Package Size: #21323-1 50ul #21323-2 100ul #21323-4 25ul

Orders: order@signalwayantibody.comSupport: tech@signalwayantibody.com

Description

Product Name	Smad2(Ab-220) Antibody
Host Species	Rabbit
Clonality	Polyclonal
Purification	Antibodies were produced by immunizing rabbits with synthetic peptide and KLH conjugates. Antibodies were purified by affinity-chromatography using epitope-specific peptide.
Applications	WB IHC
Species Reactivity	Hu Ms Rt
Specificity	The antibody detects endogenous level of total Smad2 protein.
Immunogen Type	Peptide-KLH
Immunogen Description	Peptide sequence around aa.218~222 (P-E-T-P-P) derived from Human Smad2.
Target Name	Smad2
Other Names	JV18-1; MADH2; MADR2; Mad-related protein 2; Mothers against DPP homolog 2
Accession No.	Swiss-Prot: Q15796NCBI Protein: NP_001003652.1
Concentration	1.0mg/ml
Formulation	Supplied at 1.0mg/mL in phosphate buffered saline (without Mg ²⁺ and Ca ²⁺), pH 7.4, 150mM NaCl, 0.02% sodium azide and 50% glycerol.
Storage	Store at -20°C for long term preservation (recommended). Store at 4°C for short term use.

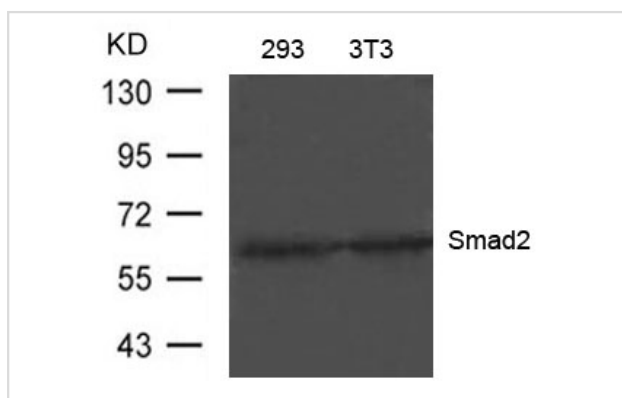
Application Details

Predicted MW: 60kd

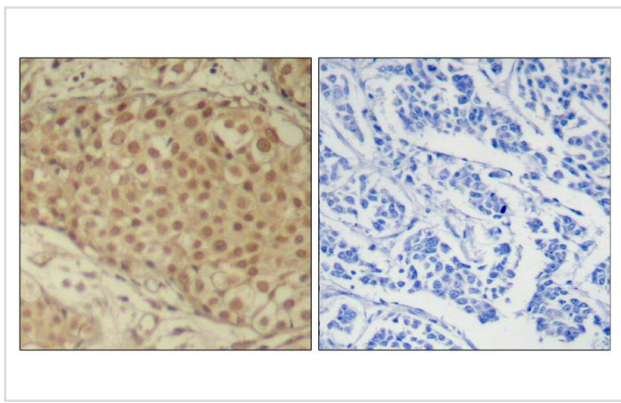
Western blotting: 1:500~1:1000

Immunohistochemistry: 1:50~1:100

Images



Western blot analysis of extracts from 293 and 3T3 cells using Smad2(Ab-220) Antibody #21323



Immunohistochemical analysis of paraffin-embedded human breast carcinoma tissue using Smad2(Ab-220) Antibody #21323(left) or the same antibody preincubated with blocking peptide(right).

Background

Transcriptional modulator activated by TGF-beta and activin type 1 receptor kinase. SMAD2 is a receptor-regulated SMAD (R-SMAD). May act as a tumor suppressor in colorectal carcinoma.

Sang Gyun Kim et al. (2004) Mol Biol Cell. February; 15(2): 420

Note: This product is for in vitro research use only and is not intended for use in humans or animals.