

# IKK-b(Ab-199) Antibody

Catalog No: #21305



Package Size: #21305-1 50ul #21305-2 100ul #21305-4 25ul

Orders: [order@signalwayantibody.com](mailto:order@signalwayantibody.com)  
Support: [tech@signalwayantibody.com](mailto:tech@signalwayantibody.com)

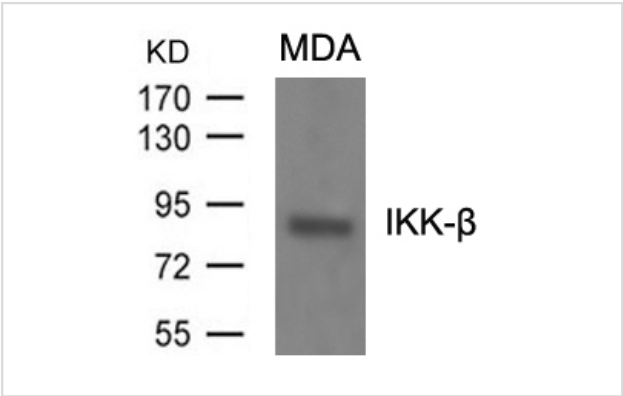
## Description

Product Name	IKK-b(Ab-199) Antibody
Host Species	Rabbit
Clonality	Polyclonal
Purification	Antibodies were produced by immunizing rabbits with synthetic peptide and KLH conjugates. Antibodies were purified by affinity-chromatography using epitope-specific peptide.
Applications	WB IF
Species Reactivity	Hu Ms Rt
Specificity	The antibody detects endogenous level of total IKK-bprotein.
Immunogen Type	Peptide-KLH
Immunogen Description	Peptide sequence around aa.197~201 (Q-K-Y-T-V) derived from Human IKK-b.
Target Name	IKK-b
Other Names	I-kappa-B kinase 2; I-kappa-B-kinase beta; IKK2; IkbKB; NFKB1KB
Accession No.	Swiss-Prot: O14920NCBI Protein: NP_001547.1
Concentration	1.0mg/ml
Formulation	Supplied at 1.0mg/mL in phosphate buffered saline (without Mg2+ and Ca2+), pH 7.4, 150mM NaCl, 0.02% sodium azide and 50% glycerol.
Storage	Store at -20°C for long term preservation (recommended). Store at 4°C for short term use.

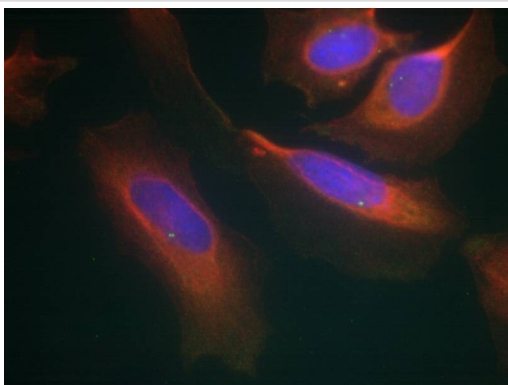
## Application Details

Predicted MW: 87kd  
Western blotting: 1:500~1:1000  
Immunofluorescence: 1:100~1:200

## Images



Western blot analysis of extracts from MDA cells using IKK-b(Ab-199) Antibody #21305.



Immunofluorescence staining of methanol-fixed HeLa cells using IKK-b(Ab-199) Antibody #21305.

## Background

Acts as part of the IKK complex in the conventional pathway of NF-kappa-B activation and phosphorylates inhibitors of NF-kappa-B thus leading to the dissociation of the inhibitor/NF-kappa-B complex and ultimately the degradation of the inhibitor. Also phosphorylates NCOA3.

Chen RA, et al. PLoS Pathog. 2008 Feb 8;4(2):e22

Yen CJ,et al. Cancer Res. 2008 Apr 15;68(8):2632-40

Note: This product is for in vitro research use only and is not intended for use in humans or animals.