

IGF-1R(Ab-1280) Antibody

Catalog No: #21302



Package Size: #21302-1 50ul #21302-2 100ul #21302-4 25ul

Orders: [order@signalwayantibody.com](mailto:order@signalwayantibody.com)  
Support: [tech@signalwayantibody.com](mailto:tech@signalwayantibody.com)

Description

Product Name	IGF-1R(Ab-1280) Antibody
Host Species	Rabbit
Clonality	Polyclonal
Purification	Antibodies were produced by immunizing rabbits with synthetic peptide and KLH conjugates. Antibodies were purified by affinity-chromatography using epitope-specific peptide.
Applications	WB IHC
Species Reactivity	Hu Ms
Specificity	The antibody detects endogenous level of total IGF-1R protein.
Immunogen Type	Peptide-KLH
Immunogen Description	Peptide sequence around aa. 1278~1282 (S-F-Y-Y-S ) derived from Human IGF-1R .
Target Name	IGF-1R
Other Names	Insulin-like growth factor I receptor
Accession No.	Swiss-Prot: P08069NCBI Protein: NP_000866.1
Concentration	1.0mg/ml
Formulation	Supplied at 1.0mg/mL in phosphate buffered saline (without Mg2+ and Ca2+), pH 7.4, 150mM NaCl, 0.02% sodium azide and 50% glycerol.
Storage	Store at -20°C for long term preservation (recommended). Store at 4°C for short term use.

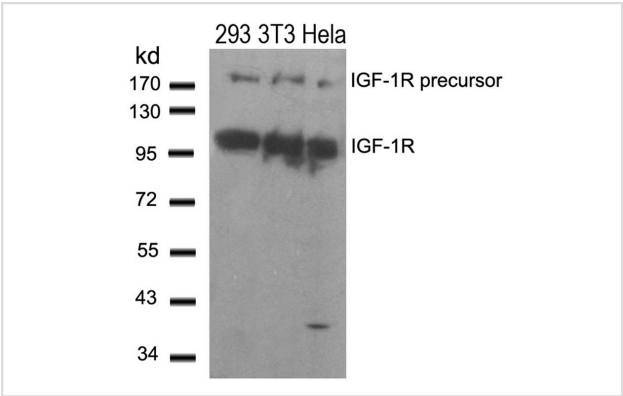
Application Details

Predicted MW: 200 95 kd

Western blotting: 1:500~1:1000

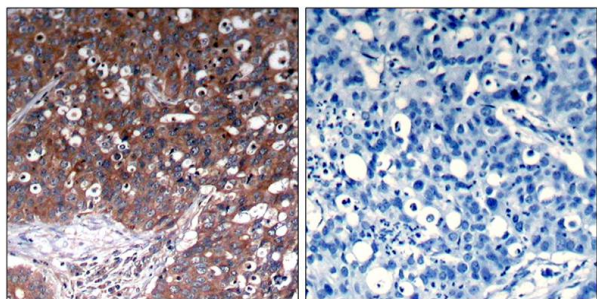
Immunohistochemistry: 1:50~1:100

Images



Western blot analysis of extracts from 293,3T3 and HeLa cells using IGF-1R(Ab-1280) Antibody #21302.





Immunohistochemical analysis of paraffin-embedded human breast carcinoma tissue using IGF-1R(Ab-1280) Antibody #21302(left) or the same antibody preincubated with blocking peptide(right).

## Background

This receptor binds insulin-like growth factor 1 (IGF1) with a high affinity and IGF2 with a lower affinity. It has a tyrosine-protein kinase activity, which is necessary for the activation of the IGF1-stimulated downstream signaling cascade. When present in a hybrid receptor with INSR, binds IGF1.

Adams, T.E. et al. (2000) Cell. Mol. Life Sci. 57, 1050-1093

Baserga, R. et al. (2000) Oncogene 19, 5574-5581

Scheidegger, K.J. et al. (2000) J. Biol. Chem. 275, 38921-38928.

O'Connor R, et al. Mol Cell Biol 1997 Jan; 17(1): 427-35

**Note:** This product is for in vitro research use only and is not intended for use in humans or animals.