

# NFkB-p100(Ab-872) Antibody

Catalog No: #21297



Package Size: #21297-1 50ul #21297-2 100ul #21297-4 25ul

Orders: [order@signalwayantibody.com](mailto:order@signalwayantibody.com)  
Support: [tech@signalwayantibody.com](mailto:tech@signalwayantibody.com)

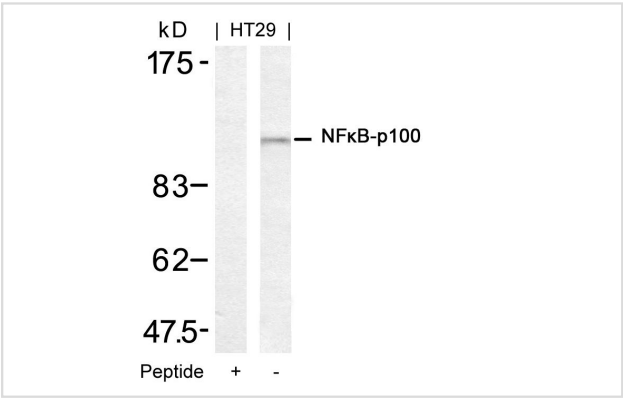
## Description

Product Name	NFkB-p100(Ab-872) Antibody
Host Species	Rabbit
Clonality	Polyclonal
Purification	Antibodies were produced by immunizing rabbits with synthetic peptide and KLH conjugates. Antibodies were purified by affinity-chromatography using epitope-specific peptide.
Applications	WB IHC IF
Species Reactivity	Hu Ms Rt
Specificity	The antibody detects endogenous level of total NFkB-p100 protein.
Immunogen Type	Peptide-KLH
Immunogen Description	Peptide sequence around aa.870~874 (S-Q-S-V-E) derived from Human NFkB-p100.
Target Name	NFkB-p100
Other Names	DNA-binding factor KBF2; H2TF1; Lymphocyte translocation chromosome 10; Lyt10; NFkB2
Accession No.	Swiss-Prot: Q00653NCBI Protein: NP_001070961.1
Concentration	1.0mg/ml
Formulation	Supplied at 1.0mg/mL in phosphate buffered saline (without Mg2+ and Ca2+), pH 7.4, 150mM NaCl, 0.02% sodium azide and 50% glycerol.
Storage	Store at -20°C for long term preservation (recommended). Store at 4°C for short term use.

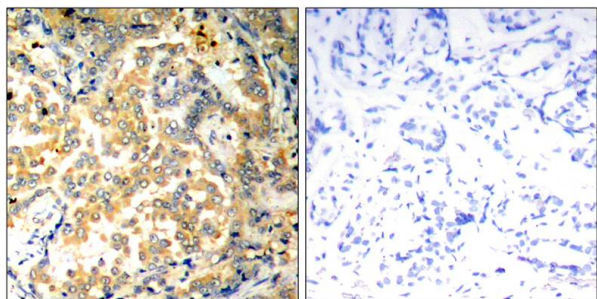
## Application Details

Predicted MW: 120 kd  
Western blotting: 1:500~1:1000  
Immunohistochemistry: 1:50~1:100  
Immunofluorescence: 1:100~1:200

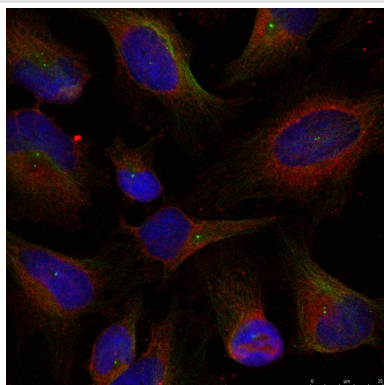
## Images



Western blot analysis of extracts from HT29 cells using NFkB-p100(Ab-872) Antibody #21297 and the same antibody preincubated with blocking peptide.



Immunohistochemical analysis of paraffin-embedded human lung carcinoma tissue using NFkB-p100/p52(Ab-872) Antibody #21297(left) or the same antibody preincubated with blocking peptide(right).



Immunofluorescence staining of methanol-fixed HeLa cells using NFkB-p100(Ab-872) Antibody #21297.

## Background

NF-kappa-B is a pleiotropic transcription factor which is present in almost all cell types and is involved in many biological processes such as inflammation, immunity, differentiation, cell growth, tumorigenesis and apoptosis. NF-kappa-B is a homo- or heterodimeric complex formed by the Rel-like domain-containing proteins RELA/p65, RELB, NFkB1/p105, NFkB1/p50, REL and NFkB2/p52. The dimers bind at kappa-B sites in the DNA of their target genes and the individual dimers have distinct preferences for different kappa-B sites that they can bind with distinguishable affinity and specificity. Different dimer combinations act as transcriptional activators or repressors, respectively.

Shin HM, et al. (2006) EMBO J; 25(1): 129-138.

Li Q, et al. (2005) Proc Natl Acad Sci USA; 102(35): 12425-12430.

Chen C, et al. (2000) Mol Cell Biol; 20(8): 2687-2695.

**Note:** This product is for in vitro research use only and is not intended for use in humans or animals.