

IkB-e(Ab-22) Antibody

Catalog No: #21296

Package Size: #21296-1 50ul #21296-2 100ul #21296-4 25ul

Orders: order@signalwayantibody.comSupport: tech@signalwayantibody.com

Description

Product Name	IkB-e(Ab-22) Antibody
Host Species	Rabbit
Clonality	Polyclonal
Purification	Antibodies were produced by immunizing rabbits with synthetic peptide and KLH conjugates. Antibodies were purified by affinity-chromatography using epitope-specific peptide.
Applications	WB IHC
Species Reactivity	Hu Ms Rt
Specificity	The antibody detects endogenous level of total IkB-e protein.
Immunogen Type	Peptide-KLH
Immunogen Description	Peptide sequence around aa. 20~24 (I-E-S-L-R) derived from Human IkB-e.
Target Name	IkB-e
Other Names	I-kappa-B-epsilon
Accession No.	Swiss-Prot: O00221NCBI Protein: NP_004547.2
Concentration	1.0mg/ml
Formulation	Supplied at 1.0mg/mL in phosphate buffered saline (without Mg ²⁺ and Ca ²⁺), pH 7.4, 150mM NaCl, 0.02% sodium azide and 50% glycerol.
Storage	Store at -20°C for long term preservation (recommended). Store at 4°C for short term use.

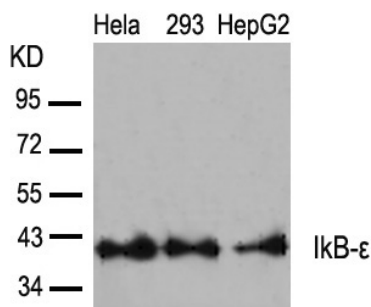
Application Details

Predicted MW: 40kd

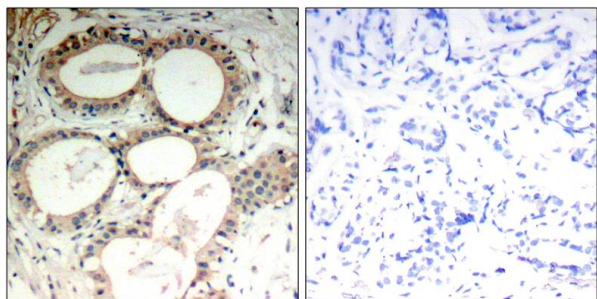
Western blotting: 1:500~1:1000

Immunohistochemistry: 1:50~1:100

Images



Western blot analysis of extracts from HeLa, 293 and HepG2 cells using IkB-e(Ab-22) Antibody #21296.



Immunohistochemical analysis of paraffin-embedded human breast carcinoma tissue using IκB-e(Ab-22) Antibody #21296(left) or the same antibody preincubated with blocking peptide(right).

Background

Inhibits NF-kappa-B by complexing with and trapping it in the cytoplasm. Inhibits DNA-binding of NF-kappa-B p50-p65 and p50-c-Rel complexes.

Shirane M, et al. (1999) J Biol Chem; 274(40): 28169-74

Karin, M. and Ben-Neriah, Y. (2000) Annu. Rev. Immunol. ;18, 621-663.

Chen, Z.J. et al. (1996) Cell; 84, 853-862.

Brown, K. et al. (1995) Science; 267, 1485-1488.

Note: This product is for in vitro research use only and is not intended for use in humans or animals.