

MEK1(Ab-291) Antibody

Catalog No: #21286

Package Size: #21286-1 50ul #21286-2 100ul #21286-4 25ul

Orders: order@signalwayantibody.com

Support: tech@signalwayantibody.com

Description

Product Name	MEK1(Ab-291) Antibody
Host Species	Rabbit
Clonality	Polyclonal
Purification	Antibodies were produced by immunizing rabbits with synthetic peptide and KLH conjugates. Antibodies were purified by affinity-chromatography using epitope-specific peptide.
Applications	WB IHC
Species Reactivity	Hu Ms Rt
Specificity	The antibody detects endogenous level of total MEK1 protein.
Immunogen Type	Peptide-KLH
Immunogen Description	Peptide sequence around aa. 289~293 (P-R-T-P-G) derived from Human MEK1.
Target Name	MEK1
Other Names	ERK activator kinase 1; MAP kinase kinase 1; MAP2K1; MAPK/ERK kinase 1; MAPKK 1
Accession No.	Swiss-Prot: Q02750NCBI Protein: NP_002746.1
Concentration	1.0mg/ml
Formulation	Supplied at 1.0mg/mL in phosphate buffered saline (without Mg ²⁺ and Ca ²⁺), pH 7.4, 150mM NaCl, 0.02% sodium azide and 50% glycerol.
Storage	Store at -20°C for long term preservation (recommended). Store at 4°C for short term use.

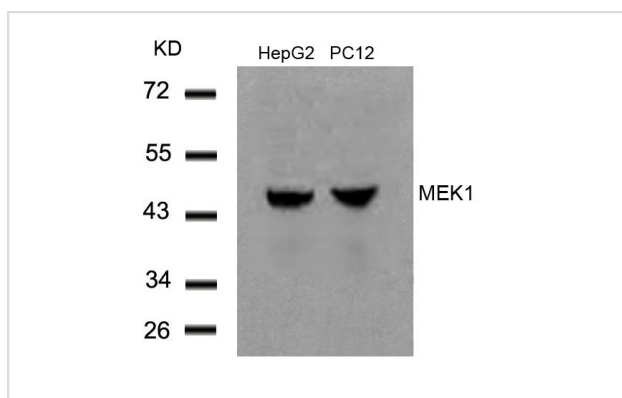
Application Details

Predicted MW: 45kd

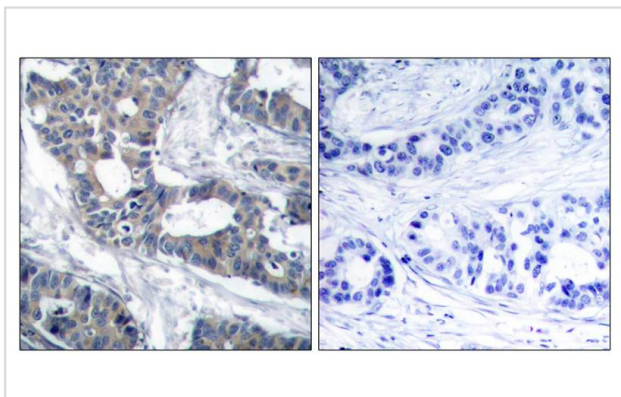
Western blotting: 1:500~1:1000

Immunohistochemistry: 1:50~1:100

Images



Western blot analysis of extracts from HepG2 and PC12 cells using MEK1(Ab-291) Antibody #21286.



Immunohistochemical analysis of paraffin-embedded human breast carcinoma tissue using MEK1(Ab-291) Antibody #21286(left) or the same antibody preincubated with blocking peptide(right).

Background

Catalyzes the concomitant phosphorylation of a threonine and a tyrosine residue in a Thr-Glu-Tyr sequence located in MAP kinases. Activates ERK1 and ERK2 MAP kinases.

Kevin D. Burroughs, et.al. (2003) *Mol. Cancer Res* ; 1: 312.

Michael J. Piatelli, et.al. (2002) *J. Biol. Chem* ; 277: 12144 - 12150.

Margaret M. Morgan, et.al. (2001) *J. Immunol* ; 167: 5708.

Herbert Schramek, et.al. (2003) *Am J Physiol Cell Physiol* , ; 285: C652 - C661.

Note: This product is for in vitro research use only and is not intended for use in humans or animals.