

Rac1(Ab-71) Antibody

Catalog No: #21201



Package Size: #21201-1 50ul #21201-2 100ul #21201-4 25ul

Orders: order@signalwayantibody.com

Support: tech@signalwayantibody.com

Description

Product Name	Rac1(Ab-71) Antibody
Host Species	Rabbit
Clonality	Polyclonal
Purification	Antibodies were produced by immunizing rabbits with synthetic peptide and KLH conjugates. Antibodies were purified by affinity-chromatography using epitope-specific peptide.
Applications	WB IF
Species Reactivity	Hu Ms Rt
Specificity	The antibody detects endogenous level of total Rac1 protein.
Immunogen Type	Peptide-KLH
Immunogen Description	Peptide sequence around aa.69~73 (P-L-S-Y-P) derived from Human Rac1.
Target Name	Rac1
Other Names	Ras-like protein TC25; Ras-related C3 botulinum toxin substrate 1; p21-Rac1
Accession No.	Swiss-Prot: P63000NCBI Protein: NP_008839.2
Concentration	1.0mg/ml
Formulation	Supplied at 1.0mg/mL in phosphate buffered saline (without Mg ²⁺ and Ca ²⁺), pH 7.4, 150mM NaCl, 0.02% sodium azide and 50% glycerol.
Storage	Store at -20°C for long term preservation (recommended). Store at 4°C for short term use.

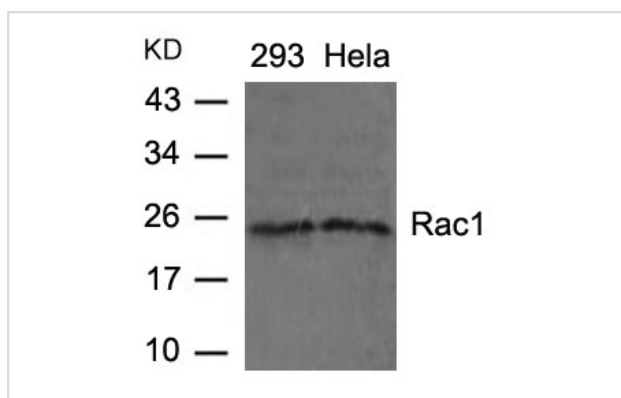
Application Details

Predicted MW: 21kd

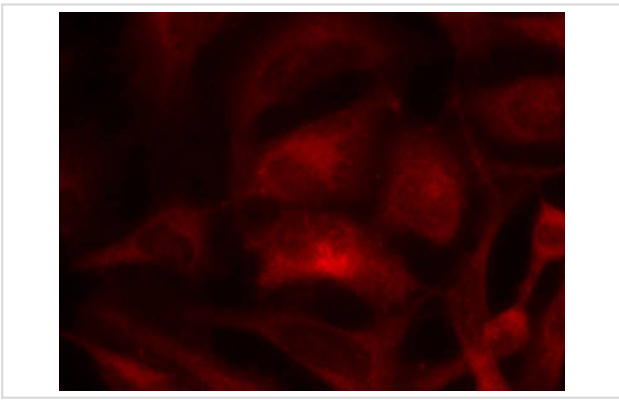
Western blotting: 1:500~1:1000

Immunofluorescence: 1:100~1:200

Images



Western blot analysis of extracts from 293 and HeLa cells using Rac1(Ab-71) Antibody #21201 .



Immunofluorescence staining of methanol-fixed HeLa cells using Rac1(Ab-71) Antibody #21201.

Background

Rac1 encoded by this gene is a GTPase which belongs to the RAS superfamily of small GTP-binding proteins. Members of this superfamily appear to regulate a diverse array of cellular events, including the control of cell growth, cytoskeletal reorganization, and the activation of protein kinases. Two transcript variants encoding different isoforms have been found for this gene.

Aoki K, et al. (2005) Mol Biol Cell; 16(5): 2207

Note: This product is for in vitro research use only and is not intended for use in humans or animals.