

## cofilin(Ab-3) Antibody

Catalog No: #21164

Package Size: #21164-1 50ul #21164-2 100ul #21164-4 25ul

Orders: [order@signalwayantibody.com](mailto:order@signalwayantibody.com)Support: [tech@signalwayantibody.com](mailto:tech@signalwayantibody.com)

## Description

Product Name	cofilin(Ab-3) Antibody
Host Species	Rabbit
Clonality	Polyclonal
Purification	Antibodies were produced by immunizing rabbits with synthetic peptide and KLH conjugates. Antibodies were purified by affinity-chromatography using epitope-specific peptide.
Applications	WB IHC
Species Reactivity	Hu Ms Rt
Specificity	The antibody detects endogenous level of total cofilin protein.
Immunogen Type	Peptide-KLH
Immunogen Description	Peptide sequence around aa. 1~5 (M-A-S-G-V) derived from Human cofilin.
Target Name	cofilin
Other Names	CFL; CFL1; COF1; Cofilin;
Accession No.	Swiss-Prot: P23528NCBI Protein: NP_000213.1
Concentration	1.0mg/ml
Formulation	Supplied at 1.0mg/mL in phosphate buffered saline (without Mg <sup>2+</sup> and Ca <sup>2+</sup> ), pH 7.4, 150mM NaCl, 0.02% sodium azide and 50% glycerol.
Storage	Store at -20°C for long term preservation (recommended). Store at 4°C for short term use.

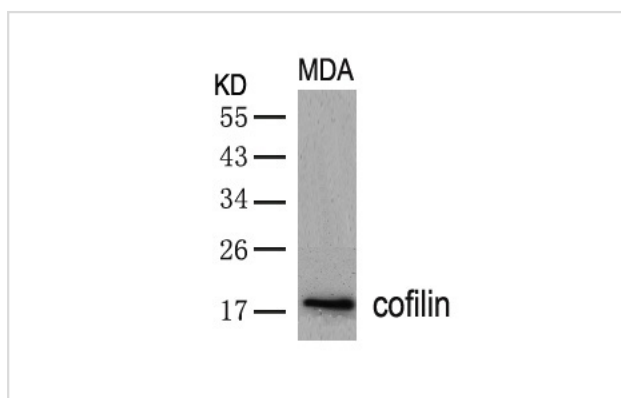
## Application Details

Predicted MW: 19kd

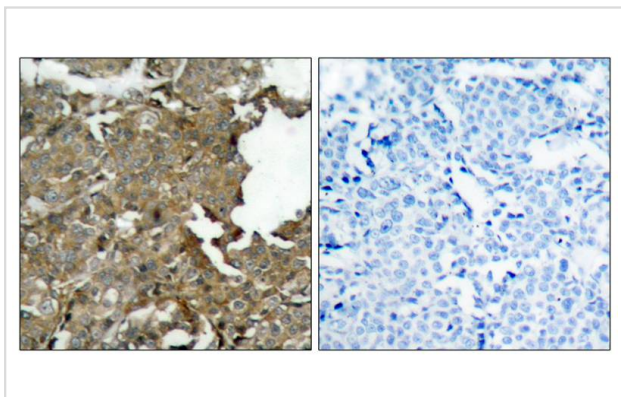
Western blotting: 1:500~1:1000

Immunohistochemistry: 1:50~1:100

## Images



Western blot analysis of extracts from MDA cells using cofilin(Ab-3) Antibody #21164.



Immunohistochemical analysis of paraffin-embedded human breast carcinoma tissue using cofilin(Ab-3) Antibody #21164(left) or the same antibody preincubated with blocking peptide(right).

## Background

Controls reversibly actin polymerization and depolymerization in a pH-sensitive manner. It has the ability to bind G- and F-actin in a 1:1 ratio of cofilin to actin. It is the major component of intranuclear and cytoplasmic actin rods.

Kobayashi M, et al. (2006) EMBO J 25(4): 713-26.

Wang Y, et al. (2005) Biol Chem 280(13): 12683-9.

Smith-Beckerman DM, et al. (2005) Mol Cell Proteomics: 156-68.

Note: This product is for in vitro research use only and is not intended for use in humans or animals.