

HSP27(Ab-15) Antibody

Catalog No: #21144



Package Size: #21144-1 50ul #21144-2 100ul #21144-4 25ul

Orders: order@signalwayantibody.comSupport: tech@signalwayantibody.com

Description

Product Name	HSP27(Ab-15) Antibody
Host Species	Rabbit
Clonality	Polyclonal
Purification	Antibodies were produced by immunizing rabbits with synthetic peptide and KLH conjugates. Antibodies were purified by affinity-chromatography using epitope-specific peptide.
Applications	WB IHC
Species Reactivity	Hu
Specificity	The antibody detects endogenous level of total HSP27 protein.
Immunogen Type	Peptide-KLH
Immunogen Description	Peptide sequence around aa.13~17 (G-P-S-W-D) derived from Human HSP27.
Target Name	HSP27
Other Names	28 kDa heat shock protein; Estrogen-regulated 24 kDa protein; Growth-related 25 kDa protein; HSP 27; HSP25
Accession No.	Swiss-Prot: P04792NCBI Protein: NP_001531.1
Concentration	1.0mg/ml
Formulation	Supplied at 1.0mg/mL in phosphate buffered saline (without Mg ²⁺ and Ca ²⁺), pH 7.4, 150mM NaCl, 0.02% sodium azide and 50% glycerol.
Storage	Store at -20°C for long term preservation (recommended). Store at 4°C for short term use.

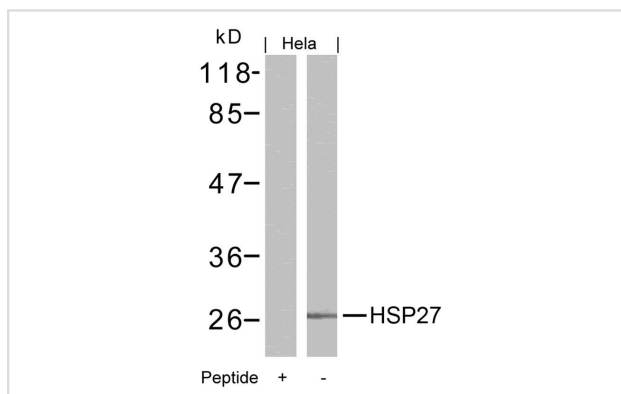
Application Details

Predicted MW: 27kd

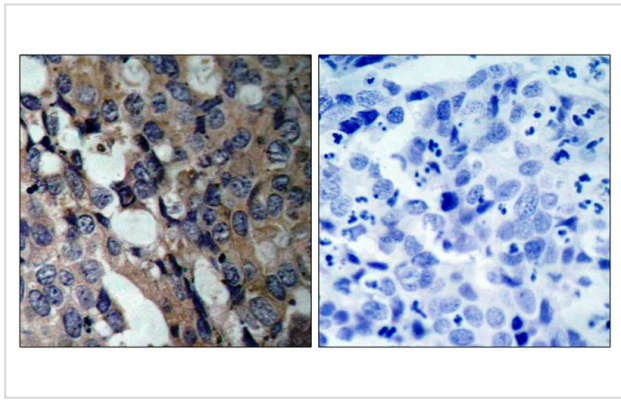
Western blotting: 1:500~1:1000

Immunohistochemistry: 1:50~1:100

Images



Western blot analysis of extracts from HeLa cells using HSP27(Ab-15) Antibody #21144 and the same antibody preincubated with blocking peptide.



Immunohistochemical analysis of paraffin-embedded human breast carcinoma tissue using HSP27(Ab-15) Antibody #21144(left) or the same antibody preincubated with blocking peptide(right).

Background

Involved in stress resistance and actin organization.

Note: This product is for in vitro research use only and is not intended for use in humans or animals.