

SEK1/MKK4(Ab-261) Antibody

Catalog No: #21131

Package Size: #21131-1 50ul #21131-2 100ul #21131-4 25ul

Orders: order@signalwayantibody.comSupport: tech@signalwayantibody.com

Description

Product Name	SEK1/MKK4(Ab-261) Antibody
Host Species	Rabbit
Clonality	Polyclonal
Purification	Antibodies were produced by immunizing rabbits with synthetic peptide and KLH conjugates. Antibodies were purified by affinity-chromatography using epitope-specific peptide.
Applications	IHC IF
Species Reactivity	Hu Ms Rt
Specificity	The antibody detects endogenous level of total SEK1/MKK4 protein.
Immunogen Type	Peptide-KLH
Immunogen Description	Peptide sequence around aa.259~263 (A-K-T-R-D) derived from Human SEK1/MKK4.
Target Name	SEK1/MKK4
Other Names	JNKK; JNKK1; MAP2K4; MAPK/ERK kinase 4; MAPKK 4
Accession No.	Swiss-Prot: P45985NCBI Protein: NP_003001.1
Concentration	1.0mg/ml
Formulation	Supplied at 1.0mg/mL in phosphate buffered saline (without Mg ²⁺ and Ca ²⁺), pH 7.4, 150mM NaCl, 0.02% sodium azide and 50% glycerol.
Storage	Store at -20°C for long term preservation (recommended). Store at 4°C for short term use.

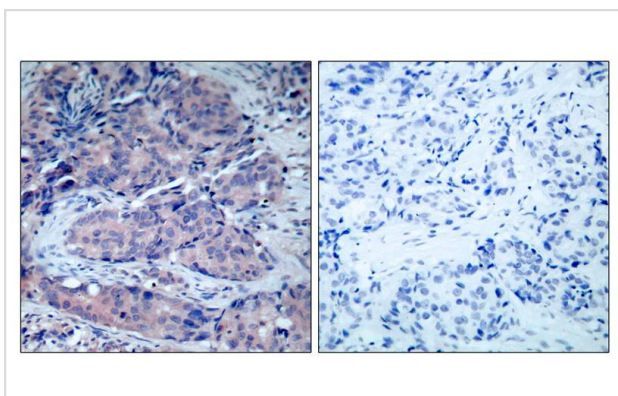
Application Details

Predicted MW: 44kd

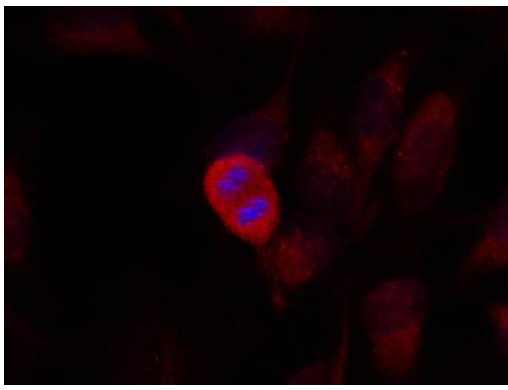
Immunohistochemistry: 1:50~1:100

Immunofluorescence: 1:100~1:200

Images



Immunohistochemical analysis of paraffin-embedded human breast carcinoma tissue using SEK1/MKK4(Ab-261) Antibody #21131(left) or the same antibody preincubated with blocking peptide(right).



Immunofluorescence staining of methanol-fixed HeLa cells using SEK1/MKK4(Ab-261) Antibody #21131.

Background

Dual specificity kinase that activates the JUN kinases MAPK8 (JNK1) and MAPK9 (JNK2) as well as MAPK14 (p38) but not MAPK1 (ERK2) or MAPK3 (ERK1).

Wang W, et al. (2002) Mol Cell Biol; 22(10): 3389-403.

Leung IW, et al. (2001) J Biol Chem; 276(3): 1961-7.

Note: This product is for in vitro research use only and is not intended for use in humans or animals.