

## Rb(Ab-780) Antibody

Catalog No: #21110



Package Size: #21110-1 50ul #21110-2 100ul #21110-4 25ul

Orders: [order@signalwayantibody.com](mailto:order@signalwayantibody.com)Support: [tech@signalwayantibody.com](mailto:tech@signalwayantibody.com)

## Description

Product Name	Rb(Ab-780) Antibody
Host Species	Rabbit
Clonality	Polyclonal
Purification	Antibodies were produced by immunizing rabbits with synthetic peptide and KLH conjugates. Antibodies were purified by affinity-chromatography using epitope-specific peptide.
Applications	WB IHC
Species Reactivity	Hu Ms Rt
Specificity	The antibody detects endogenous level of total Rb protein.
Immunogen Type	Peptide-KLH
Immunogen Description	Peptide sequence around aa. 778~782 (T-L-S-P-I) derived from Human Rb.
Target Name	Rb
Other Names	pRb
Accession No.	Swiss-Prot: P06400NCBI Protein: NP_000312.2
Concentration	1.0mg/ml
Formulation	Supplied at 1.0mg/mL in phosphate buffered saline (without Mg <sup>2+</sup> and Ca <sup>2+</sup> ), pH 7.4, 150mM NaCl, 0.02% sodium azide and 50% glycerol.
Storage	Store at -20°C for long term preservation (recommended). Store at 4°C for short term use.

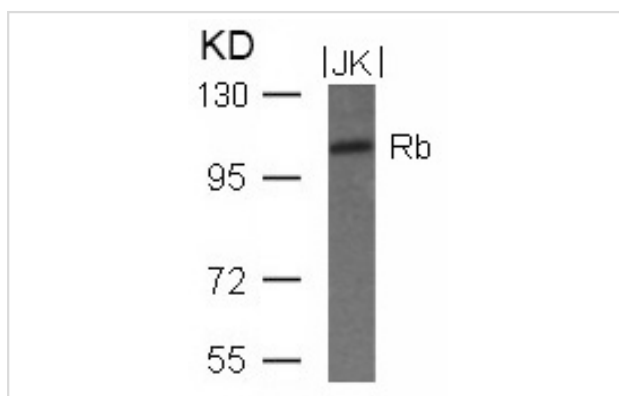
## Application Details

Predicted MW: 110kd

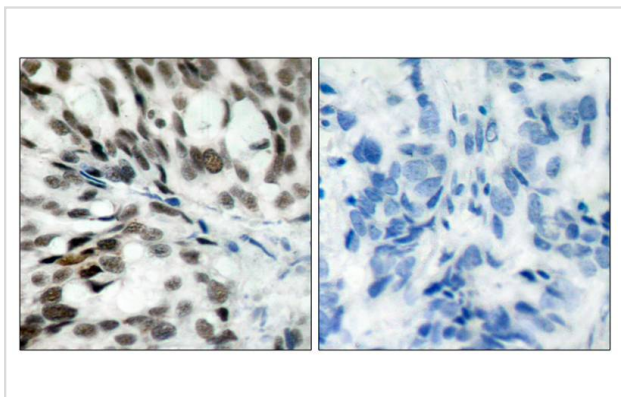
Western blotting: 1:500~1:1000

Immunohistochemistry: 1:50~1:100

## Images



Western blot analysis of extracts from JK cells using Rb(Ab-780) Antibody #21110.



Immunohistochemical analysis of paraffin-embedded human breast carcinoma tissue using Rb(Ab-780) Antibody #21110(left) or the same antibody preincubated with blocking peptide(right).

## Background

Key regulator of entry into cell division that acts as a tumor suppressor. Acts as a transcription repressor of E2F1 target genes. The underphosphorylated, active form of RB1 interacts with E2F1 and represses its transcription activity, leading to cell cycle arrest. Directly involved in heterochromatin formation by maintaining overall chromatin structure and, in particular, that of constitutive heterochromatin by stabilizing histone methylation. Recruits and targets histone methyltransferases SUV39H1, SUV420H1 and SUV420H2, leading to epigenetic transcriptional repression. Controls histone H4 'Lys-20' trimethylation. Inhibits the intrinsic kinase activity of TAF1. In case of viral infections, interactions with SV40 large T antigen, HPV E7 protein or adenovirus E1A protein induce the disassembly of RB1-E2F1 complex thereby disrupting RB1's activity.

Roesch A, et al.(2005) *Mod Pathol.* 18(4): 565-572.

Huang H, et al.(2004) *Oncogene.* 23(12): 2161-2176.

Kitagawa M, et al.(1996)*EMBO J.* 15(24): 7060-7069.

Note: This product is for in vitro research use only and is not intended for use in humans or animals.