

b-Catenin(Ab-41/45) Antibody

Catalog No: #21103

Package Size: #21103-1 50ul #21103-2 100ul #21103-4 25ul

Orders: order@signalwayantibody.comSupport: tech@signalwayantibody.com

Description

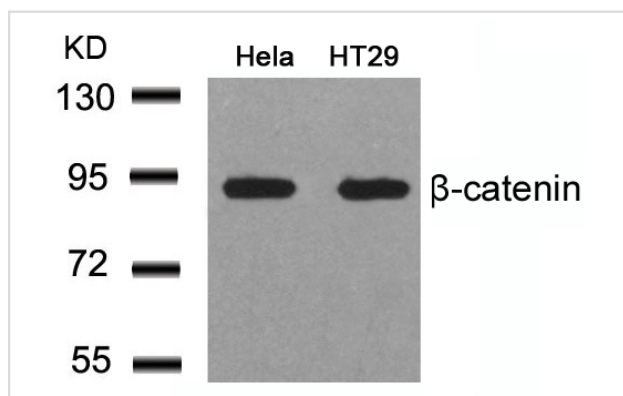
Product Name	b-Catenin(Ab-41/45) Antibody
Host Species	Rabbit
Clonality	Polyclonal
Purification	Antibodies were produced by immunizing rabbits with synthetic peptide and KLH conjugates. Antibodies were purified by affinity-chromatography using epitope-specific peptide.
Applications	WB
Species Reactivity	Human Mouse Rat
Specificity	The antibody detects endogenous level of total b-Catenin protein.
Immunogen Type	Peptide-KLH
Immunogen Description	Peptide sequence around aa.39~43/43~47 (A-T-T-T-A-P-S-L-S) derived from Human b-Catenin.
Target Name	b-Catenin
Other Names	CTNNB1; CATNB; CTNB1; CTNNB;
Accession No.	Swiss-Prot: P35222NCBI Protein: NP_001091679.1
Concentration	1.0mg/ml
Formulation	Supplied at 1.0mg/mL in phosphate buffered saline (without Mg ²⁺ and Ca ²⁺), pH 7.4, 150mM NaCl, 0.02% sodium azide and 50% glycerol.
Storage	Store at -20°C for long term preservation (recommended). Store at 4°C for short term use.

Application Details

Predicted MW: 92kd

Western blotting: 1:500~1:1000

Images



Western blot analysis of extracts from HeLa and HT29 cells using b-Catenin(Ab-41/45) Antibody #21103.

Background

Involved in the regulation of cell adhesion and in signal transduction through the Wnt pathway.

Published Papers

Qingsong Wang, Jintang He, Lingyao Meng et al., A Proteomics Analysis of Rat Liver Membrane Skeletons: The Investigation of Actin- and Cytokeratin-Based Protein Components., Journal of Proteome Research, 9(1): 22B-C29(2010)

[PMID:19354234](#)

Note: This product is for in vitro research use only and is not intended for use in humans or animals.