

## HER2(Ab-1248) Antibody

Catalog No: #21072



Package Size: #21072-1 50ul #21072-2 100ul #21072-4 25ul

Orders: order@signalwayantibody.com

Support: tech@signalwayantibody.com

## Description

Product Name	HER2(Ab-1248) Antibody
Host Species	Rabbit
Clonality	Polyclonal
Purification	Antibodies were produced by immunizing rabbits with synthetic peptide and KLH conjugates. Antibodies were purified by affinity-chromatography using epitope-specific peptide.
Applications	WB IHC IF
Species Reactivity	Hu Ms Rt
Specificity	The antibody detects endogenous level of total HER2 protein.
Immunogen Type	Peptide-KLH
Immunogen Description	Peptide sequence around aa. 1246~1250 (P-E-Y-L-G) derived from Human HER2.
Target Name	HER2
Other Names	C-erbB-2; ErbB2;
Accession No.	Swiss-Prot: P04626NCBI Protein: NP_001005862.1
Concentration	1.0mg/ml
Formulation	Supplied at 1.0mg/mL in phosphate buffered saline (without Mg <sup>2+</sup> and Ca <sup>2+</sup> ), pH 7.4, 150mM NaCl, 0.02% sodium azide and 50% glycerol.
Storage	Store at -20°C for long term preservation (recommended). Store at 4°C for short term use.

## Application Details

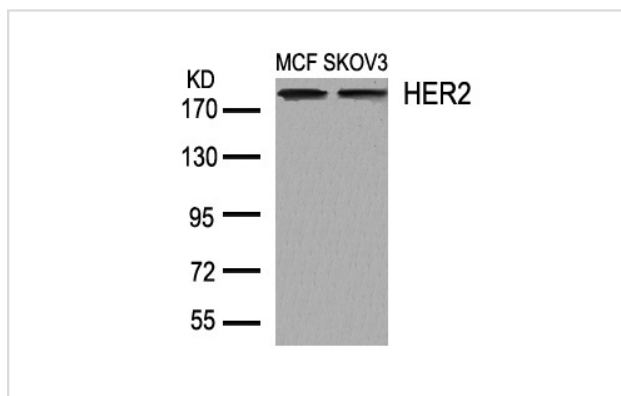
Predicted MW: 185kd

Western blotting: 1:500~1:1000

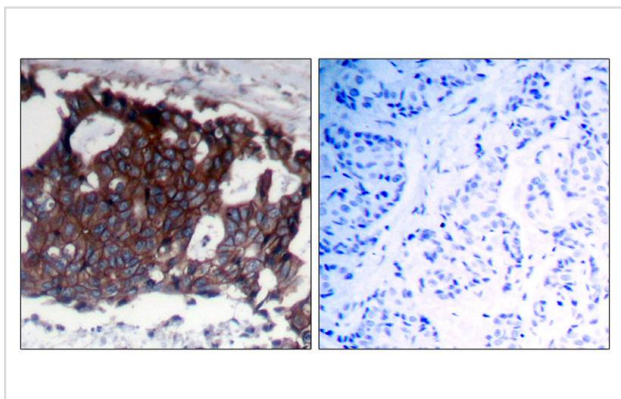
Immunohistochemistry: 1:50~1:100

Immunofluorescence: 1:100~1:200

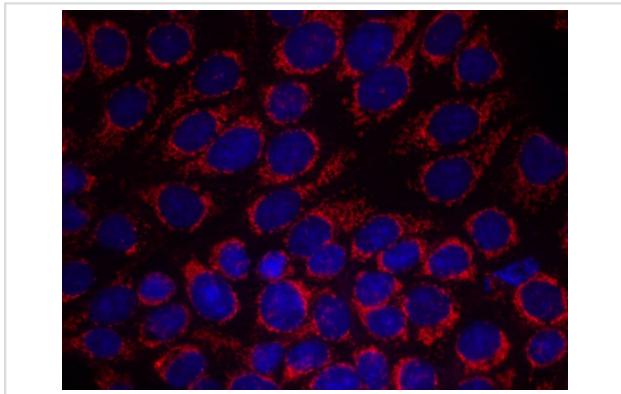
## Images



Western blot analysis of extracts from MCF and SKOV3 cells using HER2(Ab-1248) Antibody #21072.



Immunohistochemical analysis of paraffin-embedded human breast carcinoma tissue using HER2(Ab-1248) Antibody #21072(left) or the same antibody preincubated with blocking peptide(right).



Immunofluorescence staining of methanol-fixed MCF7 cells using HER2(Ab-1248) Antibody #21072.

## Background

Essential component of a neuregulin-receptor complex, although neuregulins do not interact with it alone. GP30 is a potential ligand for this receptor. Not activated by EGF, TGF- $\alpha$  and amphiregulin.

Ramsauer VP, et al. (2003) *J Biol Chem*; 278(32): 30142-7.

Jepson S, et al. (2002) *Oncogene*; 21(49): 7524-32.

Ren Z, et al. (2002) *J Biol Chem*; 277(41): 38486-93.

Eppenberger-Castori S, et al. (2001) *J Clin Oncol*; 19(3): 645-56.

Note: This product is for in vitro research use only and is not intended for use in humans or animals.