

HER2(Ab-877) Antibody

Catalog No: #21070

Package Size: #21070-1 50ul #21070-2 100ul #21070-4 25ul

Orders: order@signalwayantibody.comSupport: tech@signalwayantibody.com

Description

Product Name	HER2(Ab-877) Antibody
Host Species	Rabbit
Clonality	Polyclonal
Purification	Antibodies were produced by immunizing rabbits with synthetic peptide and KLH conjugates. Antibodies were purified by affinity-chromatography using epitope-specific peptide.
Applications	WB IHC
Species Reactivity	Hu Ms Rt
Specificity	The antibody detects endogenous level of total HER2 protein.
Immunogen Type	Peptide-KLH
Immunogen Description	Peptide sequence around aa.875~879 (T-E-Y-H-A) derived from Human HER2.
Target Name	HER2
Other Names	C-erbB-2; ErbB2;
Accession No.	Swiss-Prot: P04626NCBI Protein: NP_001005862.1
Concentration	1.0mg/ml
Formulation	Supplied at 1.0mg/mL in phosphate buffered saline (without Mg ²⁺ and Ca ²⁺), pH 7.4, 150mM NaCl, 0.02% sodium azide and 50% glycerol.
Storage	Store at -20°C for long term preservation (recommended). Store at 4°C for short term use.

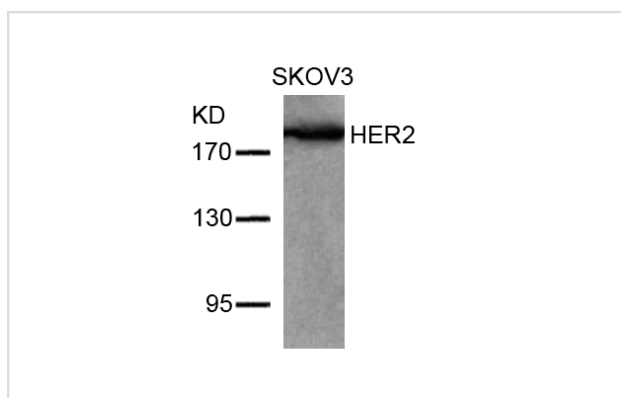
Application Details

Predicted MW: 185kd

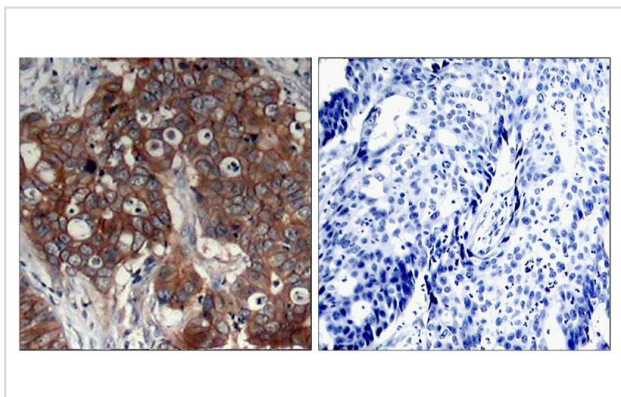
Western blotting: 1:500~1:1000

Immunohistochemistry: 1:50~1:100

Images



Western blot analysis of extracts from SKOV3 cells using HER2(Ab-877) Antibody #21070.



Immunohistochemical analysis of paraffin-embedded human breast carcinoma tissue using HER2(Ab-877) Antibody #21070(left) or the same antibody preincubated with blocking peptide(right).

Background

Essential component of a neuregulin-receptor complex, although neuregulins do not interact with it alone. GP30 is a potential ligand for this receptor. Not activated by EGF, TGF- α and amphiregulin.

Dittadi, R. et al. (2000) *J. Natl. Cancer Inst.* 92, 1443-1444.

Muthuswamy, S. K. et al. (1999) *Mol. Cell. Biol.* 19, 6845-6857.

Qian, X. et al. (1994) *Proc. Natl. Acad. Sci. USA* 91, 1500-1504.

Kwon, Y. K. et al. (1997) *J. Neurosci.* 17, 8293-8299.

Klapper, L. N. et al. (2000) *Cancer Res.* 60, 3384-3388.

Note: This product is for in vitro research use only and is not intended for use in humans or animals.