

## STAT4(Ab-693) Antibody

Catalog No: #21047

Package Size: #21047-1 50ul #21047-2 100ul #21047-4 25ul

Orders: [order@signalwayantibody.com](mailto:order@signalwayantibody.com)Support: [tech@signalwayantibody.com](mailto:tech@signalwayantibody.com)

## Description

Product Name	STAT4(Ab-693) Antibody
Host Species	Rabbit
Clonality	Polyclonal
Purification	Antibodies were produced by immunizing rabbits with synthetic peptide and KLH conjugates. Antibodies were purified by affinity-chromatography using epitope-specific peptide.
Applications	WB IHC
Species Reactivity	Hu Ms Rt
Specificity	The antibody detects endogenous level of total STAT4 protein.
Immunogen Type	Peptide-KLH
Immunogen Description	Peptide sequence around aa.691~695 (K-G-Y-V-P) derived from Human STAT4.
Target Name	STAT4
Other Names	SLEB11
Accession No.	Swiss-Prot: Q14765NCBI Protein: NP_003142.1
Concentration	1.0mg/ml
Formulation	Supplied at 1.0mg/mL in phosphate buffered saline (without Mg <sup>2+</sup> and Ca <sup>2+</sup> ), pH 7.4, 150mM NaCl, 0.02% sodium azide and 50% glycerol.
Storage	Store at -20°C for long term preservation (recommended). Store at 4°C for short term use.

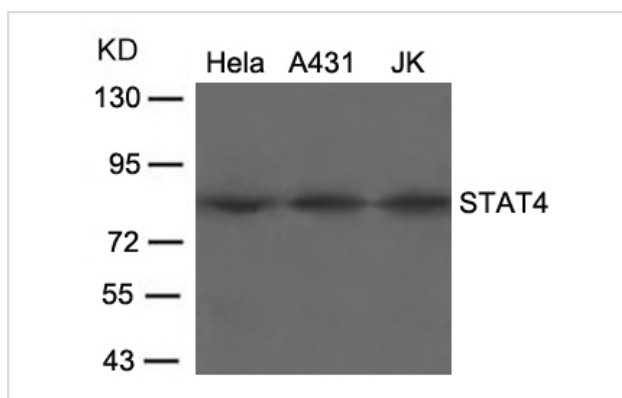
## Application Details

Predicted MW: 85kd

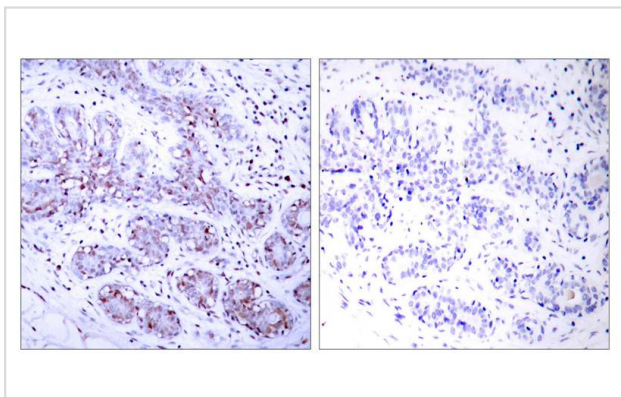
Western blotting: 1:500~1:1000

Immunohistochemistry: 1:50~1:100

## Images



Western blot analysis of extracts from HeLa, A431 and JK cells using STAT4(Ab-693) Antibody #21047.



Immunohistochemical analysis of paraffin-embedded human breast carcinoma tissue using STAT4(Ab-693) Antibody #21047(left) or the same antibody preincubated with blocking peptide(right).

## Background

Carries out a dual function: signal transduction and activation of transcription. Involved in IL12 signaling.

Strausberg R L, et al. (2002) Proc Natl Acad Sci U S A. 99(26):16899-16903.

Note: This product is for in vitro research use only and is not intended for use in humans or animals.