

#21021

## c-Jun (Ab-91) Antibody

**Catalog:** #21021-1 50µl **Orders:** [order@signalwayantibody.com](mailto:order@signalwayantibody.com)  
#21021-2 100µl **Support:** [tech@signalwayantibody.com](mailto:tech@signalwayantibody.com)  
**Storage:** Store at -20°C/1 year **Web:** [www.signalwayantibody.com](http://www.signalwayantibody.com)



Application	Species Reactivity	Source	Molecular Wt.
WB IHC IF	Human Mouse Rat	Rabbit Polyclonal Ab	43KD

**Description:** Antibodies were produced by immunizing rabbits with synthetic peptide and KLH conjugates. Antibodies were purified by affinity-chromatography using epitope-specific peptide.

**Specificity:** The antibody detects endogenous level of total c-Jun protein.

**Immunogen:** Peptide sequence around aa.89~93 (T-T-T-P-T) derived from Human c-Jun.

**Formulation:** Supplied at 1.0mg/mL in phosphate buffered saline (without Mg<sup>2+</sup> and Ca<sup>2+</sup>), pH 7.4, 150mM NaCl, 0.02% sodium azide and 50% glycerol.

**Synonyms:** AH119 AP1 Jun A c-Jun p39

**Accession No.:** Swiss-Prot#: P05412 NCBI Gene#: 3725  
NCBI Protein#: NP\_002219.1

**Background:** Transcription factor that recognizes and binds to the enhancer heptamer motif 5'-TGA[CG]TCA-3'.

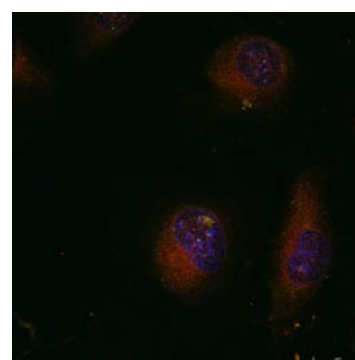
### References:

Akira Ikari, Chiaki Okude, Hayato Sawada, et al. (2008) Down-regulation of TRPM6-mediated magnesium influx by cyclosporin A Naunyn-Schmiedeberg's Archives of Pharmacology, 377(4-6):333-43.

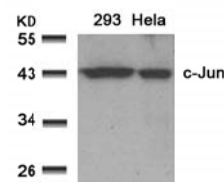
This article references the use of the #21021 in the following applications :Western blotting

### Recommended Dilutions:

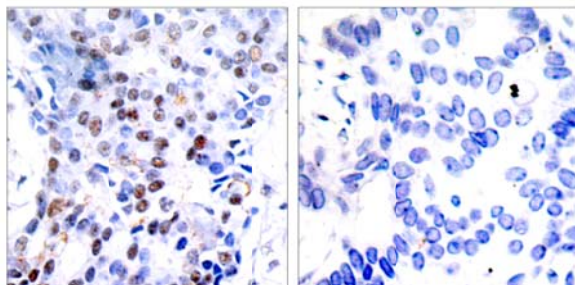
Western blotting 1:500~1:1000  
Immunohistochemistry 1:50~1:100  
Immunofluorescence 1:100~1:200



Immunofluorescence staining of methanol-fixed HeLa cells using c-Jun (Ab-91) Antibody #21021.



Western blot analysis of extracts from 293 and HeLa cells using c-Jun (Ab-91) Antibody #21021.



Immunohistochemical analysis of paraffin-embedded human breast carcinoma tissue using c-Jun (Ab-91) Antibody #21021 (left) or the same antibody preincubated with blocking peptide (right).

### Citation:

Ikari Akira, Okude Chiaki, Sawada Hayato, et al. Down-regulation of TRPM6-mediated magnesium influx by cyclosporin A Naunyn-Schmiedeberg's Archives of Pharmacology, 377(4-6):333-43,(2008)

If you publish research using #21021 please [let us know](#).

**Related Pathway:** MAPK, Chromatin/Transcription

**Note:** For western blotting, incubate membrane with diluted antibody in 5% nonfat milk, 1X TBS, 0.1% Tween-20 at 4°C with gentle shaking, overnight.

This product is for in vitro research use only and is not intended for use in humans or animals.