

#21020

Rel (Ab-503) Antibody

Catalog: #21020-1 50µl **Orders:** order@signalwayantibody.com
#21020-2 100µl **Support:** tech@signalwayantibody.com
Storage: Store at -20°C/1 year **Web:** www.signalwayantibody.com



Application	Species Reactivity	Source	Molecular Wt.
IF	Human	Rabbit Polyconal Ab	78KD

Description: Antibodies were produced by immunizing rabbits with synthetic peptide and KLH conjugates. Antibodies were purified by affinity-chromatography using epitope-specific peptide.

Specificity: The antibody detects endogenous level of total Rel protein.

Immunogen: Peptide sequence around aa.501~505 (T-S-S-D-S) derived from Human Rel.

Formulation: Supplied at 1.0mg/mL in phosphate buffered saline (without Mg²⁺ and Ca²⁺), pH 7.4, 150mM NaCl, 0.02% sodium azide and 50% glycerol.

Synonyms: C-Rel

Accession No.: Swiss-Prot#: Q04864 NCBI Gene#: 5966
NCBI Protein#: NP_002899.1

Background: The REL gene encodes c-Rel, a transcription factor that is a member of the Rel/NFκB family, which also includes RELA (MIM 164014), RELB (604758), NFκB1 (MIM 164011), and NFκB2 (MIM 164012). These proteins are related through a highly conserved N-terminal region termed the 'Rel domain,' which is responsible for DNA binding, dimerization, nuclear localization, and binding to the NFκB inhibitor (MIM 164008) (Belguise and Sonenshein, 2007 (PubMed18037997)).

References:

Copley RR et al. (2007) Genome Res. 17(9):1327-35.
Liu YW, et al. (2007) Cell Mol Life Sci. 64(24):3282-94.
Banerjee D, (2005) Immunity. 23(4):445-58.

Citation:

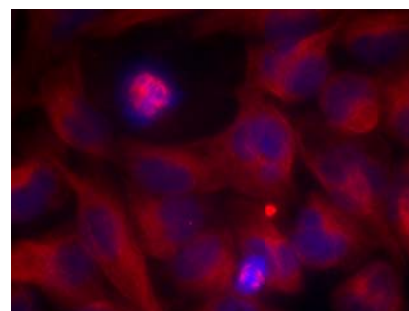
If you publish research using #21020 please [let us know](#).

Related Pathway: NF-kappa B, Chromatin/Transcription

Note: For western blotting, incubate membrane with diluted antibody in 5% nonfat milk, 1X TBS, 0.1% Tween-20 at 4°C with gentle shaking, overnight.

Recommended Dilutions:

Immunofluorescence 1:100~1:200



Immunofluorescence staining of methanol-fixed HeLa cells using Rel (Ab-503) Antibody #21020.