

#21016

NFκB-p100/p52 (Ab-870) Antibody

Catalog: #21016-1

50μl

Orders: order@signalwayantibody.com

#21016-2

100μl

Support: tech@signalwayantibody.com

Storage: Store at -20°C/1 year

Web: www.signalwayantibody.com



Application	Species Reactivity	Source	Molecular Wt.
WB IHC	Human Mouse	Rabbit Polyclonal Ab	120KD

Description: Antibodies were produced by immunizing rabbits with synthetic peptide and KLH conjugates. Antibodies were purified by affinity-chromatography using epitope-specific peptide.

Specificity: The antibody detects endogenous level of total NFκB-p100/p52 protein.

Immunogen: Peptide sequence around aa.868~872 (Y-G-S-Q-S) derived from Human NFκB-p100/p52.

Formulation: Supplied at 1.0mg/mL in phosphate buffered saline (without Mg²⁺ and Ca²⁺), pH 7.4, 150mM NaCl, 0.02% sodium azide and 50% glycerol.

Synonyms: DNA-binding factor KBF2 H2TF1 Lymphocyte translocation chromosome 10 Lyt10 NFκB2

Accession No.: Swiss-Prot#: Q00653 NCBI Gene#: 4791
NCBI Protein#: NP_001070961.1

Background: NFκB has been detected in numerous cell types that express cytokines, chemokines, growth factors, cell adhesion molecules, and some acute phase proteins in health and in various disease states. NFκB is activated by a wide variety of stimuli such as cytokines, oxidant-free radicals, inhaled particles, ultraviolet irradiation, and bacterial or viral products. Inappropriate activation of NF-kappa-B has been linked to inflammatory events associated with autoimmune arthritis, asthma, septic shock, lung fibrosis, glomerulonephritis, atherosclerosis, and AIDS. In contrast, complete and persistent inhibition of NF-kappa-B has been linked directly to apoptosis, inappropriate immune cell development, and delayed cell growth.

References:

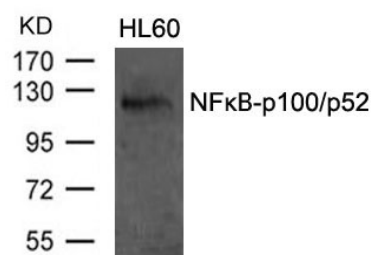
Qu Z, et al. (2004) J Biol Chem; 279(43): 44563-72.

Xiao G, et al. (2001) J Biol Chem 7(2): 401-9.

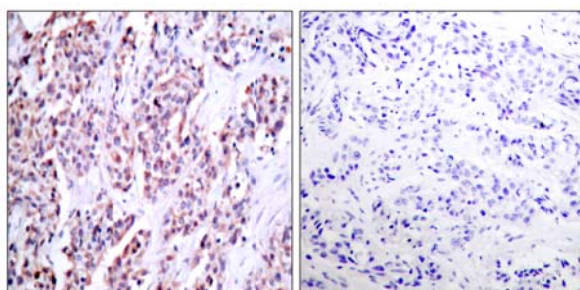
Recommended Dilutions:

Western blotting 1:500~1:1000

Immunohistochemistry 1:50~1:100



Western blot analysis of extracts from HL60 cells using NFκB-p100/p52 (Ab-870) Antibody #21016.



Immunohistochemical analysis of paraffin-embedded human breast carcinoma tissue using NFκB-p100/p52 (Ab-870) Antibody #21016 (left) or the same antibody preincubated with blocking peptide (right).

Citation:

If you publish research using #21016 please [let us know](#).

Related Pathway: NF-kappa B, Cancer/Apoptosis, Chromatin/Transcription

Note: For western blotting, incubate membrane with diluted antibody in 5% nonfat milk, 1X TBS, 0.1% Tween-20 at 4°C with gentle shaking, overnight.

This product is for in vitro research use only and is not intended for use in humans or animals.