

EpoR (Phospho-Tyr426) Polyclonal Antibody

Catalog No: #12396



Package Size: #12396-1 50ul #12396-2 100ul

Orders: order@signalwayantibody.comSupport: tech@signalwayantibody.com

Description

Product Name	EpoR (Phospho-Tyr426) Polyclonal Antibody
Host Species	Rabbit
Clonality	Polyclonal
Purification	The antibody was affinity-purified from rabbit antiserum by affinity-chromatography using epitope-specific immunogen.
Applications	WB ELISA
Species Reactivity	Hu Ms Rt
Specificity	Phospho-EpoR (Y426) Polyclonal Antibody detects endogenous levels of EpoR protein only when phosphorylated at Y426.
Immunogen Type	peptide
Immunogen Description	Synthesized peptide derived from human EpoR around the phosphorylation site of Y426.
Target Name	EpoR
Modification	Phospho-Tyr426
Other Names	EPOR; Erythropoietin receptor; EPO-R
Accession No.	Swiss-Prot: P19235NCBI Gene ID: 2057
Target Species	human
SDS-PAGE MW	55kd
Concentration	1mg/ml
Formulation	Liquid in PBS containing 50% glycerol, 0.5% BSA and 0.02% sodium azide.
Storage	Store at -20°C/1 year

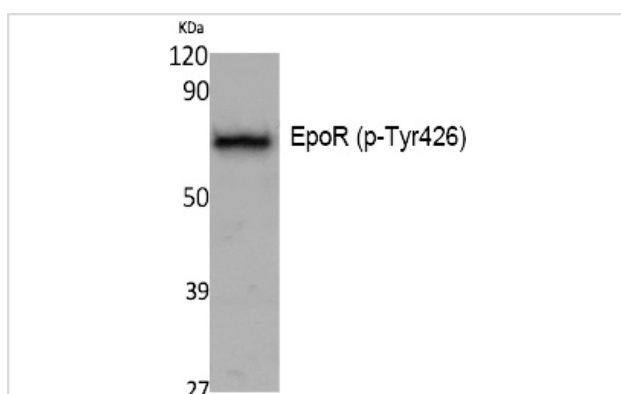
Application Details

Western blotting: 1/500 - 1/2000

ELISA: 1/20000

Not yet tested in other applications

Images



Western Blot analysis of K562, cells using Phospho-EpoR (Y426) Polyclonal Antibody

Note: This product is for in vitro research use only and is not intended for use in humans or animals.